

Nur für Forschungszwecke

RNASEH2A Monoklonaler Antikörper

Katalog-Nr.:67976-1-Ig



Allgemeine Informationen

Katalog-Nr.: 67976-1-Ig	GenBank-Zugangsnummer: BC011748	Reinigungsmethode: Protein-A-Reinigung
Größe: 150ul , Konzentration: 1000 µg/ml von10535 Nanodrop;	GeneID (NCBI): 10535	CloneNo.: 1A2E8
Wirt: Maus	Vollständiger Name: ribonuclease H2, subunit A	Empfohlene Verdünnungen: WB 1:2000-1:10000
Isotyp: IgG2a	Berechnete Masse: 299 aa, 33 kDa	
Immunogen Katalognummer: AG9256		

Anwendungen

Geprüfte Anwendungen: WB, ELISA	Positivkontrollen: WB : LNCaP-Zellen, HEK-293-Zellen, HeLa-Zellen, Jurkat-Zellen, K-562-Zellen, MCF-7-Zellen
Getestete Reaktivität: Human	

Hintergrundinformationen

RNASEH2A(Ribonuclease H2 subunit A) is also named as RNASEH1, RNH1A and belongs to the RNase HII family and Eukaryotic subfamily. It is involved in the removal of the initiator RNA primers of Okazaki fragments, an essential step during chromosomal DNA replication of the lagging strand(PMID:9482870). It is an endonuclease that specifically degrades the RNA of RNA:DNA hybrids. Defects in RNASEH2A are the cause of Aicardi-Goutieres syndrome type 4 (AGS4).

Lagerung

Lagerungsbedingungen:
Bei -20°C lagern.
Lagerungspuffer:
PBS mit 0.02% Natriumazid und 50% Glycerin pH 7.3.
Aliquotieren ist nicht notwendig bei -20°C Lagerung

*** 20ul-Größen enthalten 0.1% BSA

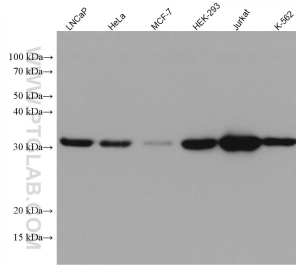
For technical support and original validation data for this product please contact:

T: 1 (888) 4PTGLAB (1-888-478-4522) (toll free
in USA), or 1(312) 455-8498 (outside USA)

E: proteintech@ptglab.com
W: ptglab.com

This product is exclusively available under Proteintech Group brand and is not available to purchase from any other manufacturer.

Ausgewählte Validierungsdaten



Various lysates were subjected to SDS PAGE followed by western blot with 67976-1-Ig (RNASEH2A antibody) at dilution of 1:5000 incubated at room temperature for 1.5 hours.