

Nur für Forschungszwecke

TEX14 Monoklonaler Antikörper

Katalog-Nr.:67982-1-Ig



Allgemeine Informationen

Katalog-Nr.: 67982-1-Ig	GenBank-Zugangsnummer: BC040526	Reinigungsmethode: Protein-A-Reinigung
Größe: 150ul , Konzentration: 1000 µg/ml von56155 Nanodrop;	GeneID (NCBI): testis expressed 14	CloneNo.: 1A11D6
Wirt: Maus	Vollständiger Name: testis expressed 14	Empfohlene Verdünnungen: WB 1:5000-1:50000 IF 1:200-1:800
Isotyp: IgG2a	Berechnete Masse: 957aa,107 kDa; 1497aa,168 kDa	
Immunogen Katalognummer: AG13143	Beobachtete Masse: 180 kDa	

Anwendungen

Geprüfte Anwendungen:

IF, WB, ELISA

Getestete Reaktivität:

Human, Kaninchen, Maus, Ratte

Positivkontrollen:

WB : Rattenhodengewebe, Kaninchenhodengewebe, Maushodengewebe, PC-3-Zellen

IF : Maushodengewebe,

Hintergrundinformationen

Tex14 is required both for the formation of intercellular bridges during meiosis and for kinetochore-microtubule attachment during mitosis. Intercellular bridges are evolutionarily conserved structures that connect differentiating germ cells and are required for spermatogenesis and male fertility. Tex14 acts by promoting the conversion of midbodies into intercellular bridges via its interaction with CEP55: interaction with CEP55 inhibits the interaction between CEP55 and PDCD6IP/ALIX and TSG101, blocking cell abscission and leading to transform midbodies into intercellular bridges. Tex14 also plays a role during mitosis: recruited to kinetochores by PLK1 during early mitosis and regulates the maturation of the outer kinetochores and microtubule attachment.

Lagerung

Lagerungsbedingungen:

Bei -20°C lagern.

Lagerungspuffer:

PBS mit 0.02% Natriumazid und 50% Glycerin pH 7.3.

Aliquotieren ist nicht notwendig bei -20°C Lagerung

***** 20ul-Größen enthalten 0.1% BSA**

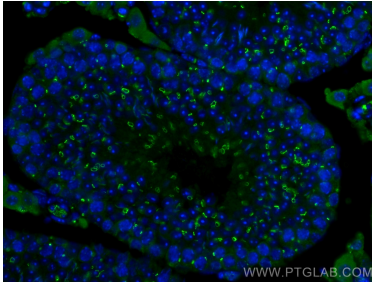
For technical support and original validation data for this product please contact:

T: 1 (888) 4PTGLAB (1-888-478-4522) (toll free in USA), or 1(312) 455-8498 (outside USA)

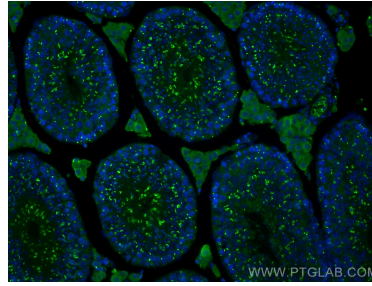
E: proteintech@ptglab.com
W: ptglab.com

This product is exclusively available under Proteintech Group brand and is not available to purchase from any other manufacturer.

Ausgewählte Validierungsdaten



Immunofluorescent analysis of (4% PFA) fixed mouse testis tissue using TEX14 antibody (67982-1-Ig, Clone: 1A11D6) at dilution of 1:400 and CoraLite®488-Conjugated AffiniPure Goat Anti-Mouse IgG(H+L).



Immunofluorescent analysis of (4% PFA) fixed mouse testis tissue using TEX14 antibody (67982-1-Ig, Clone: 1A11D6) at dilution of 1:400 and CoraLite®488-Conjugated AffiniPure Goat Anti-Mouse IgG(H+L).



rat testis tissue were subjected to SDS PAGE followed by western blot with 67982-1-Ig (TEX14 antibody) at dilution of 1:10000 incubated at room temperature for 1.5 hours.