

Nur für Forschungszwecke

# MON1B Monoklonaler Antikörper

Katalog-Nr.:67985-1-Ig

Vorgestelltes Produkt



## Allgemeine Informationen

<b>Katalog-Nr.:</b> 67985-1-Ig	<b>GenBank-Zugangsnummer:</b> BC024277	<b>Reinigungsmethode:</b> Protein-A-Reinigung
<b>Größe:</b> 150ul , Konzentration: 1000 µg/ml von22879 Nanodrop;	<b>GeneID (NCBI):</b> 22879	<b>CloneNo.:</b> 3E7C6
<b>Wirt:</b> Maus	<b>Vollständiger Name:</b> MON1 homolog B (yeast)	<b>Empfohlene Verdünnungen:</b> WB 1:2000-1:10000 IF 1:200-1:800
<b>Isotyp:</b> IgG2b	<b>Berechnete Masse:</b> 547 aa, 59 kDa	
<b>Immunogen Katalognummer:</b> AG9920	<b>Beobachtete Masse:</b> 59 kDa	

## Anwendungen

**Geprüfte Anwendungen:**  
IF, WB, ELISA

**Getestete Reaktivität:**  
Human

### Positivkontrollen:

**WB :** LNCaP-Zellen, A549-Zellen, HEK-293-Zellen, HeLa-Zellen, HepG2-Zellen, Jurkat-Zellen, K-562-Zellen, MCF-7-Zellen, SW480-Zellen

**IF :** HeLa-Zellen,

## Hintergrundinformationen

Vacuolar fusion protein MON1 homolog B (MON1B) is also named as HSRG1, KIAA0872 and SAND2, and belongs to the MON1/SAND family. The membrane recruitment of MON1B, a homolog of yeast MON1 protein in mammals, is essential for vesicular fusion of early endosomes (PMID:26987402).

## Lagerung

**Lagerungsbedingungen:**  
Bei -20°C lagern. Nach dem Versand ein Jahr lang stabil

**Lagerungspuffer:**  
PBS mit 0.02% Natriumazid und 50% Glycerin pH 7.3.

**Aliquotieren ist nicht notwendig bei -20°C Lagerung**

**\*\*\* 20ul-Größen enthalten 0.1% BSA**

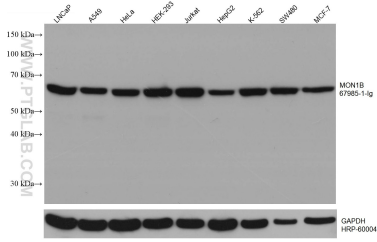
For technical support and original validation data for this product please contact:

T: 1 (888) 4PTGLAB (1-888-478-4522) (toll free in USA), or 1(312) 455-8498 (outside USA)

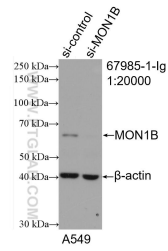
E: [proteintech@ptglab.com](mailto:proteintech@ptglab.com)  
W: [ptglab.com](http://ptglab.com)

**This product is exclusively available under Proteintech Group brand and is not available to purchase from any other manufacturer.**

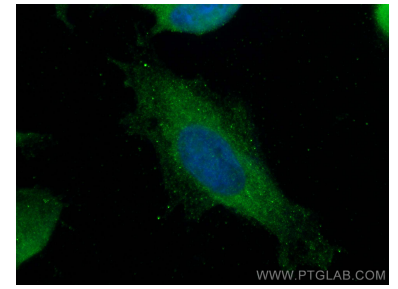
## Ausgewählte Validierungsdaten



Various lysates were subjected to SDS PAGE followed by western blot with 67985-1-Ig (MON1B antibody) at dilution of 1:5000 incubated at room temperature for 1.5 hours. The membrane was stripped and reblotted with HRP-conjugated GAPDH Monoclonal antibody (HRP-60004) as loading control.



WB result of MON1B antibody (67985-1-Ig: 1:20000; incubated at room temperature for 1.5 hours) with sh-Control and sh-MON1B transfected A549 cells.



Immunofluorescent analysis of (-20°C Methanol) fixed HeLa cells using MON1B antibody (67985-1-Ig, Clone: 3E7C6) at dilution of 1:400 and CoraLite@488-Conjugated AffiniPure Goat Anti-Mouse IgG(H+L).