

Nur für Forschungszwecke

MCM6 Monoklonaler Antikörper

Katalog-Nr.:67989-1-Ig

Vorgestelltes Produkt



Allgemeine Informationen

Katalog-Nr.: 67989-1-Ig	GenBank-Zugangsnummer: BC032374	Reinigungsmethode: Protein-G-Reinigung
Größe: 150ul, Konzentration: 1000 µg/ml von4175 Nanodrop;	GeneID (NCBI): von4175	CloneNo.: 2E12H1
Wirt: Maus	Vollständiger Name: minichromosome maintenance complex component 6	Empfohlene Verdünnungen: WB 1:20000-1:100000 IHC 1:50-1:500 IF 1:2000-1:8000
Isotyp: IgG1	Berechnete Masse: 821 aa, 93 kDa	
Immunogen Katalognummer: AG4354	Beobachtete Masse: 105 kDa	

Anwendungen

Geprüfte Anwendungen:

IF, IHC, WB, ELISA

Getestete Reaktivität:

Human, Maus, Ratte

Hinweis-IHC: Antigenmaskierung mit TE-Puffer pH 9,0 empfohlen. (*) Wahlweise kann die Antigenmaskierung auch mit Citratpuffer pH 6,0 erfolgen.

Positivkontrollen:

WB: A431-Zellen, COLO 320-Zellen, HEK-293-Zellen, HeLa-Zellen, HepG2-Zellen, Jurkat-Zellen, MCF-7-Zellen, NIH/3T3-Zellen, PC-12-Zellen

IHC: humanes Zervixkarzinomgewebe,

IF: HepG2-Zellen,

Hintergrundinformationen

The MCM genes were firstly identified in yeast defective in minichromosome maintenance and have since been shown to have roles in the progression of the cell cycle, and most of them are cell division control genes[PMID: 18096807]. MCM2-7 complex are suggested to be 'DNA licensing factors' which bind to the DNA after mitosis and enable DNA replication before being removed during S phase. Mini-chromosome maintenance 6 (MCM6) is one component of the MCM2-7 complex which is the putative replicative helicase essential for 'once per cell cycle' DNA replication initiation and elongation in eukaryotic cells[PMID: 9305914]. MCM6 single subunit forms homohexamer and contains an ATP-dependent and replication fork stimulated 3' to 5' DNA unwinding activity along with intrinsic DNA-dependent ATPase and ATP-binding activities [PMID:21336027]. The calculated molecular weight of MCM6 is 92 kDa, but the modified MCM6 is about 105 kDa.

Lagerung

Lagerungsbedingungen:

Bei -20°C lagern. Nach dem Versand ein Jahr lang stabil

Lagerungspuffer:

PBS mit 0.02% Natriumazid und 50% Glycerin pH 7.3.

Aliquotieren ist nicht notwendig bei -20°C Lagerung

*** 20ul-Größen enthalten 0.1% BSA

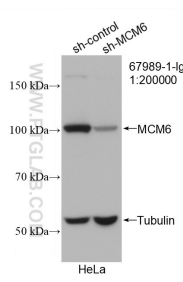
For technical support and original validation data for this product please contact:

T: 1 (888) 4PTGLAB (1-888-478-4522) (toll free in USA), or 1(312) 455-8498 (outside USA)

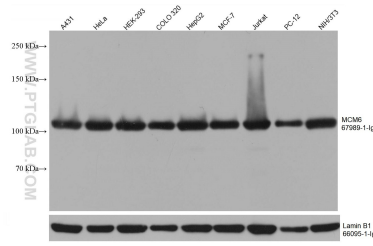
E: proteintech@ptglab.com
W: ptglab.com

This product is exclusively available under Proteintech Group brand and is not available to purchase from any other manufacturer.

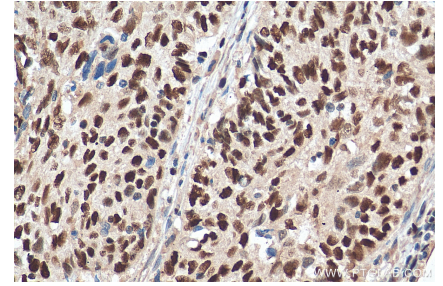
Ausgewählte Validierungsdaten



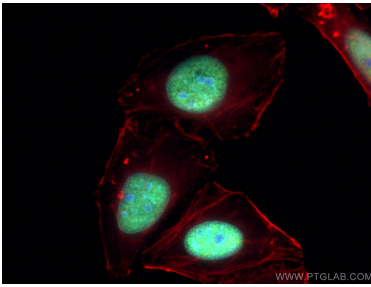
WB result of MCM6 antibody (67989-1-Ig; 1:200000; incubated at room temperature for 1.5 hours) with sh-Control and sh-MCM6 transfected HeLa cells.



Various lysates were subjected to SDS PAGE followed by western blot with 67989-1-Ig (MCM6 antibody) at dilution of 1:50000 incubated at room temperature for 1.5 hours. The membrane was stripped and reblotted with Lamin B1 Monoclonal antibody (66095-1-Ig) as loading control.



Immunohistochemical analysis of paraffin-embedded human cervical cancer tissue slide using 67989-1-Ig (MCM6 antibody) at dilution of 1:200 (under 40x lens). Heat mediated antigen retrieval with Tris-EDTA buffer (pH 9.0).



Immunofluorescent analysis of (-20°C Methanol) fixed HepG2 cells using MCM6 antibody (67989-1-Ig, Clone: 2E12H1) at dilution of 1:4000 and CoraLite®488-Conjugated AffiniPure Goat Anti-Mouse IgG(H+L), CoraLite®594 Beta Actin antibody (CL594-66009, Clone: 2D4H5, red).