

Allgemeine Informationen

Katalog-Nr.: 67993-1-Ig	GenBank-Zugangsnummer: BC006251	Reinigungsmethode: Protein-G-Reinigung
Größe: 150ul , Konzentration: 1000 µg/ml von7780 Nanodrop;	GeneID (NCBI): 7780	CloneNo.: 1D9E5
Wirt: Maus	Vollständiger Name: solute carrier family 30 (zinc transporter), member 2	Empfohlene Verdünnungen: WB 1:2000-1:12000 IHC 1:300-1:1200
Isotyp: IgG1	Berechnete Masse: 323 aa, 35 kDa	
Immunogen Katalognummer: AG8232	Beobachtete Masse: 41 kDa	

Anwendungen

Geprüfte Anwendungen:

IHC, WB, ELISA

Getestete Reaktivität:

Human, Maus

Hinweis-IHC: Antigenmaskierung mit TE-Puffer pH 9,0 empfohlen. (*) Wahlweise kann die Antigenmaskierung auch mit Citratpuffer pH 6,0 erfolgen.

Positivkontrollen:

WB : MCF-7-Zellen, ATDC-5-Zellen, Caco-2-Zellen, HaCaT-Zellen, HeLa-Zellen, HT-29-Zellen, JAR-Zellen, NCCIT-Zellen

IHC : humanes Pankreaskarzinomgewebe,

Hintergrundinformationen

SLC30A2, also named as the Zn transporter 2 gene (ZnT2), belongs to the cation diffusion facilitator (CDF) transporter (TC 2.A.4) family and SLC30A subfamily. It plays a role in the zinc ion transmembrane transport. Expression of SLC30A2 is restricted to secretory cells, such as acinar pancreatic cells, prostate epithelial cells, placental trophoblasts, Paneth cells, and mammary epithelial cells (MECs). SLC30A2 consists of six transmembrane domains with cytoplasmic N- and C-termini that contain numerous regulatory domains, and functions as a homo- or hetero- dimer to transport Zn into vesicles (PMID: 29476070). SLC30A2 has 2 isoforms with the molecular mass of 35 and 41 kDa.

Lagerung

Lagerungsbedingungen:

Bei -20°C lagern.

Lagerungspuffer:

PBS mit 0.02% Natriumazid und 50% Glycerin pH 7.3.

Aliquotieren ist nicht notwendig bei -20°C Lagerung

*** 20ul-Größen enthalten 0.1% BSA

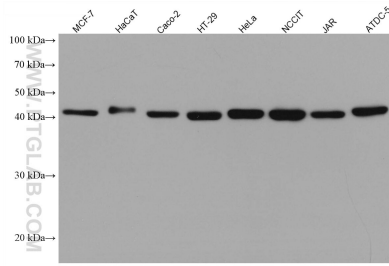
For technical support and original validation data for this product please contact:

T: 1 (888) 4PTGLAB (1-888-478-4522) (toll free in USA), or 1(312) 455-8498 (outside USA)

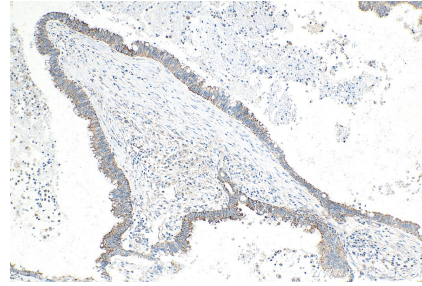
E: proteintech@ptglab.com
W: ptglab.com

This product is exclusively available under Proteintech Group brand and is not available to purchase from any other manufacturer.

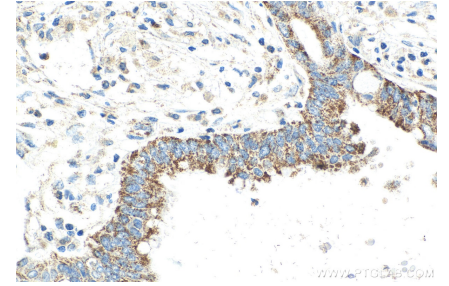
Ausgewählte Validierungsdaten



Various lysates were subjected to SDS PAGE followed by western blot with 67993-1-Ig (SLC30A2 antibody) at dilution of 1:6000 incubated at room temperature for 1.5 hours.



Immunohistochemical analysis of paraffin-embedded human pancreas cancer tissue slide using 67993-1-Ig (SLC30A2 antibody) at dilution of 1:600 (under 10x lens). Heat mediated antigen retrieval with Tris-EDTA buffer (pH 9.0).



Immunohistochemical analysis of paraffin-embedded human pancreas cancer tissue slide using 67993-1-Ig (SLC30A2 antibody) at dilution of 1:600 (under 40x lens). Heat mediated antigen retrieval with Tris-EDTA buffer (pH 9.0).