

Nur für Forschungszwecke

# Phospho-STAT5A (Tyr694) Monoklonaler Antikörper



Katalog-Nr.: 68000-1-Ig

## Allgemeine Informationen

<b>Katalog-Nr.:</b> 68000-1-Ig	<b>GenBank-Zugangsnummer:</b> BC027036	<b>Reinigungsmethode:</b> Protein-A-Reinigung
<b>Größe:</b> 100ul , Konzentration: 1000 µg/ml von6776 Nanodrop;	<b>GeneID (NCBI):</b> 6776	<b>CloneNo.:</b> 1F7G5
<b>Wirt:</b> Maus	<b>Vollständiger Name:</b> signal transducer and activator of transcription 5A	<b>Empfohlene Verdünnungen:</b> WB 1:5000-1:50000
<b>Isotyp:</b> IgG2a	<b>Berechnete Masse:</b> 794 aa, 92 kDa	
	<b>Beobachtete Masse:</b> 90 kDa	

## Anwendungen

<b>Geprüfte Anwendungen:</b> WB, ELISA	<b>Positivkontrollen:</b> WB : TF-1-Zellen, Mit GM-CSF behandelte TF-1-Zellen
<b>Getestete Reaktivität:</b> Human	

## Hintergrundinformationen

STAT5A, also named as STAT5, belongs to the transcription factor STAT family. In response to cytokines and growth factors, STAT family members are phosphorylated by the receptor associated kinases, and then form homo- or heterodimers that translocate to the cell nucleus where they act as transcription activators. STAT5A is activated by, and mediates the responses of many cell ligands, such as IL2, IL3, IL7 GM-CSF, erythropoietin, thrombopoietin, and different growth hormones. Activation of STAT5A in myeloma and lymphoma associated with a TEL/JAK2 gene fusion is independent of cell stimulus and has been shown to be essential for the tumorigenesis. The mouse counterpart of human STAT5A is found to induce the expression of BCL2L1/BCL-X(L), which suggests the antiapoptotic function of STAT5A in cells. This antibody is a rabbit polyclonal antibody raised against residues near the C terminus of human STAT5A.

## Lagerung

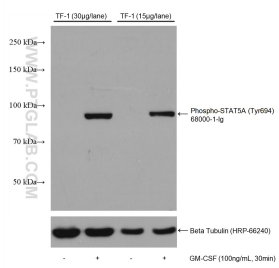
**Lagerungsbedingungen:**  
Bei -20°C lagern.  
**Lagerungspuffer:**  
PBS mit 0.02% Natriumazid und 50% Glycerin pH 7.3.  
Aliquotieren ist nicht notwendig bei -20°C Lagerung

**\*\*\* 20ul-Größen enthalten 0.1% BSA**

For technical support and original validation data for this product please contact:  
T: 1 (888) 4PTGLAB (1-888-478-4522) (toll free in USA), or 1(312) 455-8498 (outside USA)  
E: proteintech@ptglab.com  
W: ptglab.com

This product is exclusively available under Proteintech Group brand and is not available to purchase from any other manufacturer.

## Ausgewählte Validierungsdaten



Non-treated and GM-CSF treated TF-1 cells were subjected to SDS PAGE followed by western blot with 68000-1-Ig (Phospho-STAT5A (Tyr694) antibody) at dilution of 1:20000 incubated at room temperature for 1.5 hours. The membrane was stripped and re-blotted with Beta Tubulin antibody as loading control.