

Nur für Forschungszwecke

Alpha B Crystallin Monoklonaler Antikörper



Katalog-Nr.:68001-1-Ig

Allgemeine Informationen

| | | |
|--|---|---|
| Katalog-Nr.: 68001-1-Ig | GenBank-Zugangsnummer: BC007008 | Reinigungsmethode: Protein-A-Reinigung |
| Größe: 150ul , Konzentration: 1000 µg/ml von1410 Nanodrop; | GeneID (NCBI): 1410 | CloneNo.: 1B4C3 |
| Wirt: Maus | Vollständiger Name: crystallin, alpha B | Empfohlene Verdünnungen: WB 1:5000-1:50000 IHC 1:1000-1:4000 |
| Isotyp: IgG2b | Berechnete Masse: 175 aa, 20 kDa | |
| Immunogen Katalognummer: AG8656 | Beobachtete Masse: 20-22 kDa | |

Anwendungen

Geprüfte Anwendungen:

IHC, WB, ELISA

Getestete Reaktivität:

Human, Maus, Ratte

Hinweis-IHC: Antigendemaskierung mit TE-Puffer pH 9,0 empfohlen. (*) Wahlweise kann die Antigendemaskierung auch mit Citratpuffer pH 6,0 erfolgen.

Positivkontrollen:

WB : Maus-Augengewebe, Ratten-Augengewebe

IHC : Maus-Augengewebe,

Hintergrundinformationen

Alpha B-crystallin, encoded by CRYAB gene, is multifunctional, serving as both a major structural protein in the lens and a small heat-shock protein in other tissues in mammals. Alpha B-crystallin may contribute to the transparency and refractive index of the lens. Single nucleotide polymorphisms (SNPs) in the promoter region of CRYAB gene have been associated with in multiple sclerosis. Mutations in the CRYAB gene cause distinct clinical phenotypes including isolated posterior polar cataract, myofibrillar myopathy, cardiomyopathy, or a multisystemic disorder combining all these features. Impairment of alpha-B crystallin dimerization may be relevant to the pathogenesis of these disorders.

Lagerung

Lagerungsbedingungen:

Bei -20°C lagern.

Lagerungspuffer:

PBS mit 0.02% Natriumazid und 50% Glycerin pH 7.3.

Aliquotieren ist nicht notwendig bei -20°C Lagerung

*** 20ul-Größen enthalten 0.1% BSA

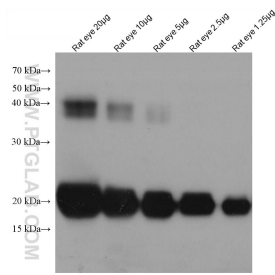
For technical support and original validation data for this product please contact:

T: 1 (888) 4PTGLAB (1-888-478-4522) (toll free in USA), or 1(312) 455-8498 (outside USA)

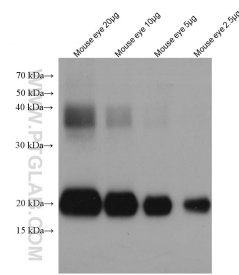
E: proteintech@ptglab.com
W: ptglab.com

This product is exclusively available under Proteintech Group brand and is not available to purchase from any other manufacturer.

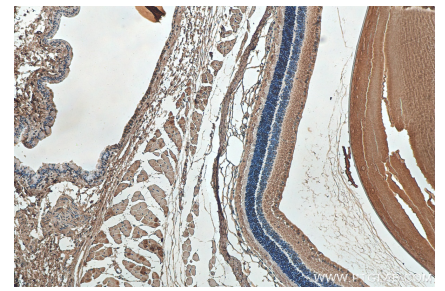
Ausgewählte Validierungsdaten



rat eye tissue were subjected to SDS PAGE followed by western blot with 68001-1-Ig (aB-Crystallin antibody) at dilution of 1:20000 incubated at room temperature for 1.5 hours.



mouse eye tissue were subjected to SDS PAGE followed by western blot with 68001-1-Ig (aB-Crystallin antibody) at dilution of 1:20000 incubated at room temperature for 1.5 hours.



Immunohistochemical analysis of paraffin-embedded mouse eye tissue slide using 68001-1-Ig (Alpha B Crystallin antibody) at dilution of 1:2000 (under 10x lens). Heat mediated antigen retrieval with Tris-EDTA buffer (pH 9.0).