

Nur für Forschungszwecke

# STK11/LKB1 Monoklonaler Antikörper

Katalog-Nr.:68016-1-Ig



## Allgemeine Informationen

<b>Katalog-Nr.:</b> 68016-1-Ig	<b>GenBank-Zugangsnummer:</b> BC007981	<b>Reinigungsmethode:</b> Protein-G-Reinigung
<b>Größe:</b> 150ul, Konzentration: 500 µg/ml von Nanodrop;	<b>GeneID (NCBI):</b> 6794	<b>CloneNo.:</b> 2D11E5
<b>Wirt:</b> Maus	<b>Vollständiger Name:</b> serine/threonine kinase 11	<b>Empfohlene Verdünnungen:</b> WB 1:1000-1:9800 IHC 1:250-1:1000
<b>Isotyp:</b> IgG1	<b>Berechnete Masse:</b> 49 kDa	
	<b>Beobachtete Masse:</b> 50-55 kDa	

## Anwendungen

### Geprüfte Anwendungen:

IHC, WB, ELISA

### Getestete Reaktivität:

Human, Maus, Ratte

**Hinweis-IHC: Antigendemaskierung mit TE-Puffer pH 9,0 empfohlen. (\*) Wahlweise kann die Antigendemaskierung auch mit Citratpuffer pH 6,0 erfolgen.**

### Positivkontrollen:

**WB:** HEK-293-Zellen, HeLa-Zellen, mit Calyculin A behandelte HSC-T6-Zellen, NIH/3T3-Zellen, PC-3-Zellen

**IHC:** Maushodengewebe,

## Hintergrundinformationen

STK11 (serine/threonine-protein kinase 11) is also named as LKB1, PJS, and belongs to the protein kinase superfamily. It controls the activity of AMP-activated protein kinase (AMPK) family members, thereby playing a role in various processes such as cell metabolism, cell polarity, apoptosis and DNA damage response. The tumour suppressor protein LKB1 is a serine/threonine kinase that has been causally linked to Peutz-Jeghers syndrome (PJS). Defects in STK11 are a cause of Peutz-Jeghers syndrome (PJS) and defects in STK11 have been associated with testicular germ cell tumor (TGCT) and some sporadic cancers, especially lung cancers. STK11 has 2 isoforms with MW of 49 kDa and 45 kDa, and can be detected as 50-54 kDa after posttranslational modification.

## Lagerung

### Lagerungsbedingungen:

Bei -20°C lagern. Nach dem Versand ein Jahr lang stabil

### Lagerungspuffer:

PBS mit 0.02% Natriumazid und 50% Glycerin pH 7.3.

Aliquotieren ist nicht notwendig bei -20°C Lagerung

\*\*\* 20ul-Größen enthalten 0.1% BSA

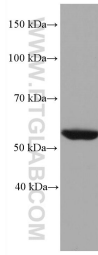
For technical support and original validation data for this product please contact:

T: 1 (888) 4PTGLAB (1-888-478-4522) (toll free in USA), or 1(312) 455-8498 (outside USA)

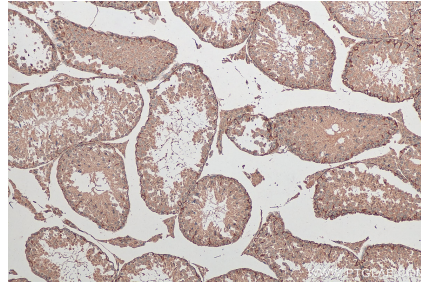
E: [proteintech@ptglab.com](mailto:proteintech@ptglab.com)  
W: [ptglab.com](http://ptglab.com)

This product is exclusively available under Proteintech Group brand and is not available to purchase from any other manufacturer.

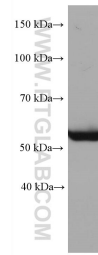
## Ausgewählte Validierungsdaten



HEK-293 cells were subjected to SDS PAGE followed by western blot with 68016-1-Ig (STK11/LKB1 antibody) at dilution of 1:4900 incubated at room temperature for 1.5 hours.



Immunohistochemical analysis of paraffin-embedded mouse testis tissue slide using 68016-1-Ig (STK11/LKB1 antibody) at dilution of 1:500 (under 10x lens). Heat mediated antigen retrieval with Tris-EDTA buffer (pH 9.0).



NIH/3T3 cells were subjected to SDS PAGE followed by western blot with 68016-1-Ig (STK11/LKB1 antibody) at dilution of 1:5000 incubated at room temperature for 1.5 hours.