

Allgemeine Informationen

Katalog-Nr.: 68018-1-Ig	GenBank-Zugangsnummer: BC027241	Reinigungsmethode: Protein-G-Reinigung
Größe: 150ul , Konzentration: 500 µg/ml von Nanodrop;	GeneID (NCBI): 10840	CloneNo.: 1C1A3
Wirt: Maus	Vollständiger Name: aldehyde dehydrogenase 1 family, member L1	Empfohlene Verdünnungen: WB 1:5000-1:50000 IHC 1:16000-1:64000
Isotyp: IgG1	Berechnete Masse: 99 kDa	
Immunogen Katalognummer: AG13190	Beobachtete Masse: 100 kDa	

Anwendungen

Geprüfte Anwendungen:

IHC, WB, ELISA

Getestete Reaktivität:

Hausschwein, Human, Maus, Ratte

Hinweis-IHC: Antigendemaskierung mit TE-Puffer pH 9,0 empfohlen. (*) Wahlweise kann die Antigendemaskierung auch mit Citratpuffer pH 6,0 erfolgen.

Positivkontrollen:

WB : humanes Kolostrum, Hausschwein-Lebergewebe, Mauslebergewebe, Rattenlebergewebe

IHC : Maushirngewebe,

Hintergrundinformationen

Aldehyde dehydrogenase 1 family member L1 (ALDH1L1), belongs to the aldehyde dehydrogenase family of proteins and is responsible for formate oxidation in vivo. Loss of ALDH1L1 is associated with decreased apoptosis, increased cell motility, and cancer progression. ALDH1L1 catalyzes the conversion of 10-formyltetrahydrofolate, nicotinamide adenine dinucleotide phosphate (NADP⁺), and water to tetrahydrofolate, NADPH, and carbon dioxide. ALDH1L1 has some isoforms with MW of 99, 88 and 55 kDa.

Lagerung

Lagerungsbedingungen:

Bei -20°C lagern.

Lagerungspuffer:

PBS mit 0.02% Natriumazid und 50% Glycerin pH 7.3.

Aliquotieren ist nicht notwendig bei -20°C Lagerung

***** 20ul-Größen enthalten 0.1% BSA**

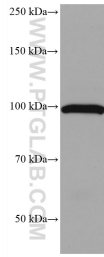
For technical support and original validation data for this product please contact:

T: 1 (888) 4PTGLAB (1-888-478-4522) (toll free in USA), or 1(312) 455-8498 (outside USA)

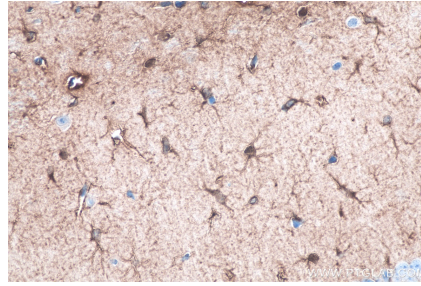
E: proteintech@ptglab.com
W: ptglab.com

This product is exclusively available under Proteintech Group brand and is not available to purchase from any other manufacturer.

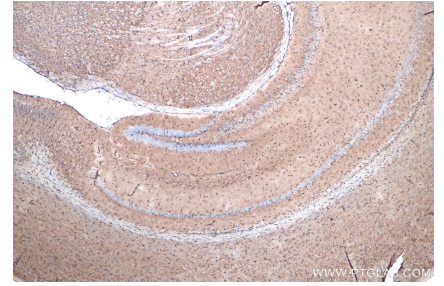
Ausgewählte Validierungsdaten



human colostrum were subjected to SDS PAGE followed by western blot with 68018-1-Ig (ALDH1L1 antibody) at dilution of 1:20000 incubated at room temperature for 1.5 hours.



Immunohistochemical analysis of paraffin-embedded mouse brain tissue slide using 68018-1-Ig (ALDH1L1 antibody) at dilution of 1:32000 (under 40x lens). Heat mediated antigen retrieval with Tris-EDTA buffer (pH 9.0).



Immunohistochemical analysis of paraffin-embedded mouse brain tissue slide using 68018-1-Ig (ALDH1L1 antibody) at dilution of 1:32000 (under 4x lens). Heat mediated antigen retrieval with Tris-EDTA buffer (pH 9.0).