

Allgemeine Informationen

Katalog-Nr.: 68020-1-Ig	GenBank-Zugangsnummer: BC011519	Reinigungsmethode: Protein-A-Reinigung
Größe: 150ul , Konzentration: 500 µg/ml von Nanodrop;	GeneID (NCBI): 183	CloneNo.: 1B2F5
Wirt: Maus	Vollständiger Name: angiotensinogen (serpin peptidase inhibitor, clade A, member 8)	Empfohlene Verdünnungen: WB 1:5000-1:20000 IHC 1:500-1:2000 IF 1:200-1:800
Isotyp: IgG2b	Berechnete Masse: 485 aa, 53 kDa	
Immunogen Katalognummer: AG16658	Beobachtete Masse: 52 kDa	

Anwendungen

Geprüfte Anwendungen:

IF, IHC, WB, ELISA

Getestete Reaktivität:

Hausschwein, Human

Hinweis-IHC: Antigendemaskierung mit TE-Puffer pH 9,0 empfohlen. (*) Wahlweise kann die Antigendemaskierung auch mit Citratpuffer pH 6,0 erfolgen.

Positivkontrollen:

WB : human plasma, HuH-7-Zellen, humanes Plazenta-Gewebe, THP-1-Zellen

IHC : humanes Nierengewebe, humanes Lebergewebe

IF : HepG2-Zellen,

Hintergrundinformationen

Angiotensinogen is a precursor of angiotensin II (Ang II), is expressed and synthesized largely in the liver and is cleaved by the enzyme renin in response to lowered blood pressure. It has a key role in mediating vascular constriction and regulating salt and fluid homeostasis. The resulting product, angiotensin I, is then cleaved by angiotensin converting enzyme (ACE) to generate the physiologically active enzyme angiotensin II. Mutations in this gene are associated with susceptibility to essential hypertension, and can cause renal tubular dysgenesis, a severe disorder of renal tubular development. Defects in this gene also have been associated with non-familial structural atrial fibrillation, and inflammatory bowel disease.

Lagerung

Lagerungsbedingungen:

Bei -20°C lagern.

Lagerungspuffer:

PBS mit 0.02% Natriumazid und 50% Glycerin pH 7.3.

Aliquotieren ist nicht notwendig bei -20°C Lagerung

*** 20ul-Größen enthalten 0.1% BSA

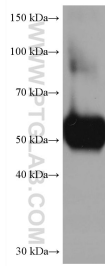
For technical support and original validation data for this product please contact:

T: 1 (888) 4PTGLAB (1-888-478-4522) (toll free
in USA), or 1(312) 455-8498 (outside USA)

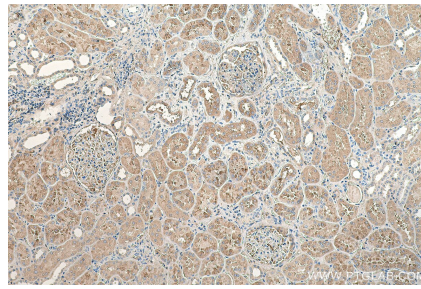
E: proteintech@ptglab.com
W: ptglab.com

This product is exclusively available under Proteintech Group brand and is not available to purchase from any other manufacturer.

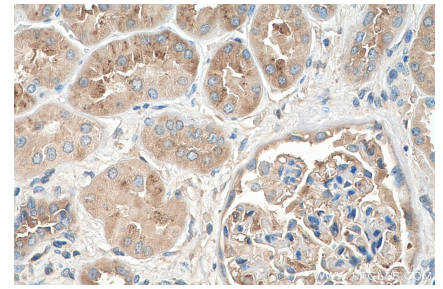
Ausgewählte Validierungsdaten



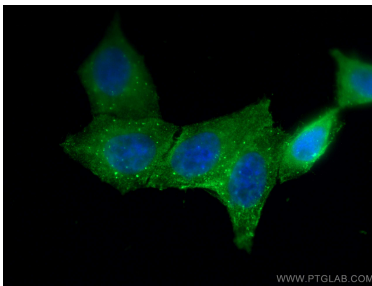
human plasma were subjected to SDS PAGE followed by western blot with 68020-1-Ig (AGT antibody) at dilution of 1:10000 incubated at room temperature for 1.5 hours.



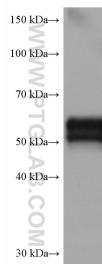
Immunohistochemical analysis of paraffin-embedded human kidney tissue slide using 68020-1-Ig (AGT antibody) at dilution of 1:1000 (under 10x lens). Heat mediated antigen retrieval with Tris-EDTA buffer (pH 9.0).



Immunohistochemical analysis of paraffin-embedded human kidney tissue slide using 68020-1-Ig (AGT antibody) at dilution of 1:1000 (under 40x lens). Heat mediated antigen retrieval with Tris-EDTA buffer (pH 9.0).



Immunofluorescent analysis of (4% PFA) fixed HepG2 cells using AGT antibody (68020-1-Ig, Clone: 1B2F5) at dilution of 1:400 and CoraLite®488-Conjugated AffiniPure Goat Anti-Mouse IgG(H+L).



human placenta tissue were subjected to SDS PAGE followed by western blot with 68020-1-Ig (AGT antibody) at dilution of 1:10000 incubated at room temperature for 1.5 hours.