

Nur für Forschungszwecke

SFXN1 Monoklonaler Antikörper

Katalog-Nr.:68024-1-Ig



Allgemeine Informationen

Katalog-Nr.: 68024-1-Ig	GenBank-Zugangsnummer: BC020517	Reinigungsmethode: Protein-G-Reinigung
Größe: 150ul , Konzentration: 1000 µg/ml von94081 Nanodrop;	GeneID (NCBI): 94081	CloneNo.: 2D9F1
Wirt: Maus	Vollständiger Name: sideroflexin 1	Empfohlene Verdünnungen: WB 1:5000-1:50000 IF 1:200-1:800
Isotyp: IgG1	Berechnete Masse: 35.6 kDa	
Immunogen Katalognummer: AG2985	Beobachtete Masse: 32 kDa	

Anwendungen

Geprüfte Anwendungen:

IF, WB, ELISA

Getestete Reaktivität:

Human, Maus, Ratte

Positivkontrollen:

WB : PC-3-Zellen, HeLa-Zellen, HepG2-Zellen, Jurkat-Zellen, LNCaP-Zellen, MCF-7-Zellen, MOLT-4-Zellen

IF : MCF-7-Zellen,

Hintergrundinformationen

SFXN1, the founding member of the SLC56 family, was identified by positional cloning of the mutation in the flexed-tail mouse model with sideroblastic anemia. SFXN1 was recently identified as a mitochondrial serine transporter essential for one-carbon (1C) metabolism, a process in which folate species are generated and used in biosynthetic pathways required for cell proliferation. In HEK293 cells, SFXN1 is the most abundant isoform among the SFXNs.

Lagerung

Lagerungsbedingungen:

Bei -20°C lagern. Nach dem Versand ein Jahr lang stabil

Lagerungspuffer:

PBS mit 0.02% Natriumazid und 50% Glycerin pH 7.3.

Aliquotieren ist nicht notwendig bei -20°C Lagerung

*** 20ul-Größen enthalten 0.1% BSA

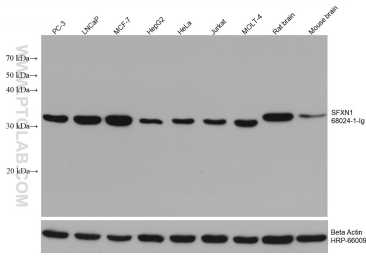
For technical support and original validation data for this product please contact:

T: 1 (888) 4PTGLAB (1-888-478-4522) (toll free in USA), or 1(312) 455-8498 (outside USA)

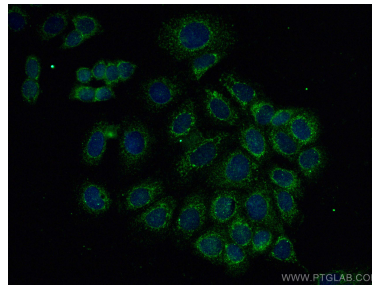
E: proteintech@ptglab.com
W: ptglab.com

This product is exclusively available under Proteintech Group brand and is not available to purchase from any other manufacturer.

Ausgewählte Validierungsdaten



Various lysates were subjected to SDS PAGE followed by western blot with 68024-1-Ig (SFXN1 antibody) at dilution of 1:10000 incubated at room temperature for 1.5 hours. The membrane was stripped and reblotted with HRP-conjugated Beta Actin Monoclonal antibody (HRP-66009) as loading control.



Immunofluorescent analysis of (-20°C Methanol) fixed MCF-7 cells using SFXN1 antibody (68024-1-Ig, Clone: 2D9F1) at dilution of 1:400 and CoraLite®488-Conjugated AffiniPure Goat Anti-Mouse IgG(H+L).