

Nur für Forschungszwecke

SLC39A3 Monoklonaler Antikörper

Katalog-Nr.:68025-1-Ig



Allgemeine Informationen

Katalog-Nr.: 68025-1-Ig	GenBank-Zugangsnummer: BC005869	Reinigungsmethode: Protein-A-Reinigung
Größe: 150ul , Konzentration: 1000 µg/ml von29985 Nanodrop;	GeneID (NCBI): 29985	CloneNo.: 1A11F6
Wirt: Maus	Vollständiger Name: solute carrier family 39 (zinc transporter), member 3	Empfohlene Verdünnungen: WB 1:2000-1:10400
Isotyp: IgG2a	Berechnete Masse: 314 aa, 34 kDa	
Immunogen Katalognummer: AG14289	Beobachtete Masse: 32 kDa	

Anwendungen

Geprüfte Anwendungen: WB, ELISA	Positivkontrollen: WB : ungekochte HepG2-Zellen, bei 37°C inkubierte A549-Zellen, Jurkat-Zellen, K-562-Zellen, LNCaP-Zellen
Getestete Reaktivität: Human	

Hintergrundinformationen

SLC39A3, also named as ZIP3, belongs to the ZIP transporter (TC 2.A.5) family. SLC39A3 is a Zn importer that acts as a zinc-influx transporter. SLC39A3 is highly expressed in a cell-type-specific manner in ovaries, testes, and the developing nervous system with limited expression in the small intestinal crypt cells, kidney glomerulus, and discrete regions of the liver. SLC39A3 is also expressed in highly specialized, hormonally responsive secretory tissues, such as the pancreas, prostate, and mammary gland (PMID: 19458277). SLC39A3 has 2 isoforms with the molecular mass of 11 and 34 kDa.

Lagerung

Lagerungsbedingungen:
Bei -20°C lagern. Nach dem Versand ein Jahr lang stabil
Lagerungspuffer:
PBS mit 0.02% Natriumazid und 50% Glycerin pH 7.3.
Aliquotieren ist nicht notwendig bei -20°C Lagerung

***** 20ul-Größen enthalten 0.1% BSA**

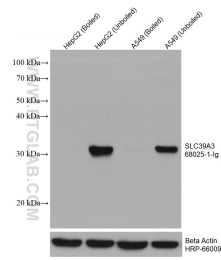
For technical support and original validation data for this product please contact:

T: 1 (888) 4PTGLAB (1-888-478-4522) (toll free in USA), or 1(312) 455-8498 (outside USA)

E: proteintech@ptglab.com
W: ptglab.com

This product is exclusively available under Proteintech Group brand and is not available to purchase from any other manufacturer.

Ausgewählte Validierungsdaten



Various lysates were subjected to SDS PAGE followed by western blot with 68025-1-Ig (SLC39A3 antibody) at dilution of 1:5200 incubated at room temperature for 1.5 hours. The membrane was stripped and reblotted with HRP-conjugated Beta Actin Monoclonal antibody (HRP-66009) as loading control.