

Nur für Forschungszwecke

# DUSP22 Monoklonaler Antikörper

Katalog-Nr.:68032-1-Ig



## Allgemeine Informationen

<b>Katalog-Nr.:</b> 68032-1-Ig	<b>GenBank-Zugangsnummer:</b> BC022847	<b>Reinigungsmethode:</b> Protein-A-Reinigung
<b>Größe:</b> 150ul , Konzentration: 1000 µg/ml von56940 Nanodrop;	<b>GeneID (NCBI):</b> 56940	<b>CloneNo.:</b> 3B8F1
<b>Wirt:</b> Maus	<b>Vollständiger Name:</b> dual specificity phosphatase 22	<b>Empfohlene Verdünnungen:</b> WB 1:2000-1:10000 IF 1:400-1:1600
<b>Isotyp:</b> IgG2a	<b>Berechnete Masse:</b> 184 aa, 21 kDa	
<b>Immunogen Katalognummer:</b> AG9831	<b>Beobachtete Masse:</b> 21 kDa	

## Anwendungen

<b>Geprüfte Anwendungen:</b> IF, WB, ELISA	<b>Positivkontrollen:</b>
<b>Getestete Reaktivität:</b> Human, Kaninchen, Maus, Ratte	<b>WB :</b> Rattenhirngewebe, Kaninchenhirngewebe, Maushirngewebe
	<b>IF :</b> NIH/3T3-Zellen,

## Hintergrundinformationen

DUSP22(Dual specificity protein phosphatase 22) is also named as JSP1, LMWDSP2, MKPX. It has been demonstrated to belong to a new subgroup of small DSPs anchored at the membranes by an N-terminal myristic acid moiety and DUSP22 play a regulatory role in the JNK or p38 MAPK pathways(PMID:17384676). It has 2 isoforms produced by alternative splicing with the molecular weight of 21 kDa and 23 kDa.

## Lagerung

**Lagerungsbedingungen:**  
Bei -20°C lagern.  
**Lagerungspuffer:**  
PBS mit 0.02% Natriumazid und 50% Glycerin pH 7.3.  
Aliquotieren ist nicht notwendig bei -20°C Lagerung

\*\*\* 20ul-Größen enthalten 0.1% BSA

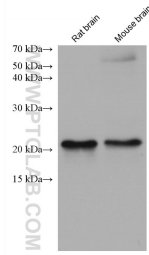
For technical support and original validation data for this product please contact:

T: 1 (888) 4PTGLAB (1-888-478-4522) (toll free  
in USA), or 1(312) 455-8498 (outside USA)

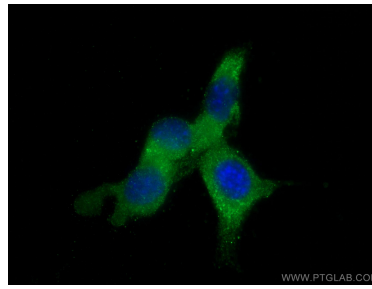
E: [proteintech@ptglab.com](mailto:proteintech@ptglab.com)  
W: [ptglab.com](http://ptglab.com)

This product is exclusively available under Proteintech Group brand and is not available to purchase from any other manufacturer.

## Ausgewählte Validierungsdaten



Various lysates were subjected to SDS PAGE followed by western blot with 68032-1-Ig (DUSP22 antibody) at dilution of 1:5000 incubated at room temperature for 1.5 hours.



Immunofluorescent analysis of (-20°C Methanol) fixed NIH/3T3 cells using DUSP22 antibody (68032-1-Ig, Clone: 3B8F1) at dilution of 1:800 and CoraLite®488-Conjugated AffiniPure Goat Anti-Mouse IgG(H+L).