

Allgemeine Informationen

Katalog-Nr.: 68033-1-Ig	GenBank-Zugangsnummer: NM_000573	Reinigungsmethode: Protein-G-Reinigung
Größe: 150ul, Konzentration: 1000 µg/ml von 1378 Nanodrop und 549 µg/ml durch die Bradford-Methode mit BSA als Standard;	GeneID (NCBI): 150ul, Konzentration: 1000 µg/ml von 1378 Nanodrop und 549 µg/ml durch die Bradford-Methode mit BSA als Standard;	CloneNo.: 1B8E6
Wirt: Maus	Vollständiger Name: complement component (3b/4b) receptor 1 (Knops blood group)	Empfohlene Verdünnungen: IHC 1:550-1:2200 IF 1:200-1:800
Isotyp: IgG1	Berechnete Masse: 224 kDa	
Immunogen Katalognummer: AG30268		

Anwendungen

Geprüfte Anwendungen: IF, IHC, ELISA	Positivkontrollen:
Getestete Reaktivität: Human	IHC: humanes Tonsillitisgewebe, IF: humanes Appendizitis-Gewebe,
Hinweis-IHC: Antigendemaskierung mit TE-Puffer pH 9,0 empfohlen. (*) Wahlweise kann die Antigendemaskierung auch mit Citratpuffer pH 6,0 erfolgen.	

Hintergrundinformationen

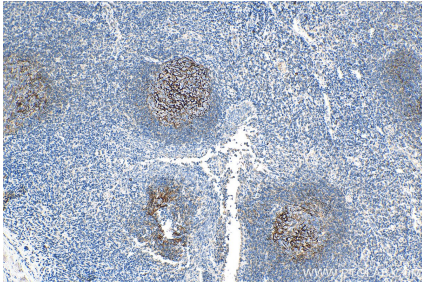
Complement receptor type 1 (CR1), also known as C3b/C4b receptor or CD35, is a single-chain glycoprotein consisting of 30 repeating homologous protein domains known as short consensus repeats (~60 amino acids each) followed by transmembrane and cytoplasmic domains (PMID: 8765013). CR1 is variably expressed by granulocytes, monocytes, B cells, some T cells, erythrocytes, follicular dendritic cells, Langerhan cells and glomerular podocytes (PMID: 19004497). CR1 acts as a receptor for C3b and C4b and plays important roles in regulation of the complement cascade and clearance of immune complexes. A soluble form of CR1 (sCR1) has been found in plasma (PMID: 3156931). It has been reported that sCR1 is produced by a proteolytic cleavage in the C-terminal region of CR1 transmembrane domain (PMID: 9405292).

Lagerung

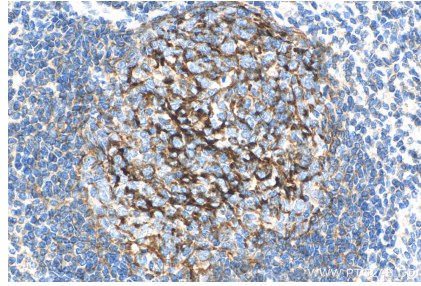
Lagerungsbedingungen:
Bei -20°C lagern. Nach dem Versand ein Jahr lang stabil
Lagerungspuffer:
PBS mit 0.02% Natriumazid und 50% Glycerin pH 7.3.
Aliquotieren ist nicht notwendig bei -20°C Lagerung

***** 20ul-Größen enthalten 0.1% BSA**

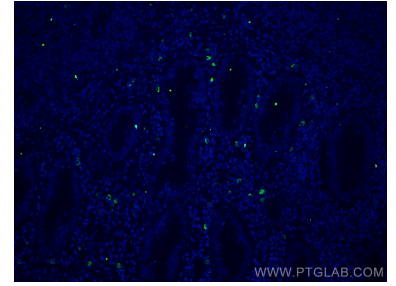
Ausgewählte Validierungsdaten



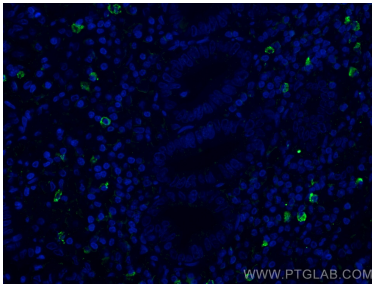
Immunohistochemical analysis of paraffin-embedded human tonsillitis tissue slide using 68033-1-Ig (CR1 antibody) at dilution of 1:1100 (under 10x lens). Heat mediated antigen retrieval with Tris-EDTA buffer (pH 9.0).



Immunohistochemical analysis of paraffin-embedded human tonsillitis tissue slide using 68033-1-Ig (CR1 antibody) at dilution of 1:1100 (under 40x lens). Heat mediated antigen retrieval with Tris-EDTA buffer (pH 9.0).



Immunofluorescent analysis of (4% PFA) fixed human appendicitis tissue using CR1 antibody (68033-1-Ig, Clone: 1B8E6) at dilution of 1:400 and CoraLite®488-Conjugated AffiniPure Goat Anti-Mouse IgG(H+L).



Immunofluorescent analysis of (4% PFA) fixed human appendicitis tissue using CR1 antibody (68033-1-Ig, Clone: 1B8E6) at dilution of 1:400 and CoraLite®488-Conjugated AffiniPure Goat Anti-Mouse IgG(H+L).