

Nur für Forschungszwecke

# Phospho-RPS6KA1 (Thr359/Ser363) Monoklonaler Antikörper



Katalog-Nr.: 68041-1-Ig

## Allgemeine Informationen

<b>Katalog-Nr.:</b> 68041-1-Ig	<b>GenBank-Zugangsnummer:</b> BC014966	<b>Reinigungsmethode:</b> Protein-G-Reinigung
<b>Größe:</b> 100ul, Konzentration: 1000 µg/ml von 6195 Nanodrop;	<b>GeneID (NCBI):</b> 6195	<b>CloneNo.:</b> 2C11D9
<b>Wirt:</b> Maus	<b>Vollständiger Name:</b> ribosomal protein S6 kinase, 90kDa, polypeptide 1	<b>Empfohlene Verdünnungen:</b> WB 1:5000-1:50000
<b>Isotyp:</b> IgG1	<b>Berechnete Masse:</b> 735 aa, 83 kDa	
	<b>Beobachtete Masse:</b> 80 kDa	

## Anwendungen

**Geprüfte Anwendungen:**  
WB, ELISA

**Getestete Reaktivität:**  
Human, Maus

**Positivkontrollen:**

**WB:** NIH/3T3-Zellen, HeLa-Zellen, Mit λ-Phosphatase behandelte HeLa-Zellen, Mit λ-Phosphatase behandelte NIH/3T3-Zellen

## Hintergrundinformationen

The 90 kDa ribosomal S6 kinases (RSK1-4) are a family of widely expressed serine/threonine kinases and play an important role in the MAPK signaling cascade and act downstream of ERK1/2 signaling. It can mediate mitogenic and stress-induced activation of the transcription factors CREB1, ETV1/ER81 and NR4A1/NUR77. RSK1 (RPS6KA1) is also designated as p90RSK associated with cellular proliferation, survival and differentiation. RPS6KA1 has some phosphorylation sites including Ser380, Thr359 and Ser363 which are important for kinase activation. (PMID: 16458888, 30813401, 17259979, 10679322)

## Lagerung

**Lagerungsbedingungen:**

Bei -20°C lagern.

**Lagerungspuffer:**

PBS mit 0.02% Natriumazid und 50% Glycerin pH 7.3.

Aliquotieren ist nicht notwendig bei -20°C Lagerung

**\*\*\* 20ul-Größen enthalten 0.1% BSA**

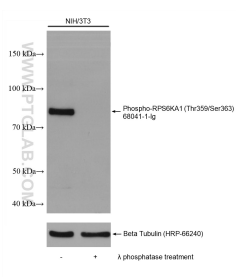
For technical support and original validation data for this product please contact:

T: 1 (888) 4PTGLAB (1-888-478-4522) (toll free  
in USA), or 1(312) 455-8498 (outside USA)

E: proteintech@ptglab.com  
W: ptglab.com

**This product is exclusively available under Proteintech Group brand and is not available to purchase from any other manufacturer.**

## Ausgewählte Validierungsdaten



Non-treated and  $\lambda$  phosphatase treated NIH/3T3 cells were subjected to SDS PAGE followed by western blot with 68041-1-Ig (Phospho-RPS6KA1 (Thr359/Ser363) antibody) at dilution of 1:20000 incubated at room temperature for 1.5 hours. The membrane was stripped and re-blotted with Beta-Tubulin (HRP-66240) as loading control.