

## Allgemeine Informationen

<b>Katalog-Nr.:</b> 68058-1-Ig	<b>GenBank-Zugangsnummer:</b> BC018652	<b>Reinigungsmethode:</b> Protein-G-Reinigung
<b>Größe:</b> 150ul, Konzentration: 1000 µg/ml von53826 Nanodrop;	<b>GeneID (NCBI):</b> 53826	<b>CloneNo.:</b> 2H1B7
<b>Wirt:</b> Maus	<b>Vollständiger Name:</b> FXVD domain containing ion transport regulator 6	<b>Empfohlene Verdünnungen:</b> WB 1:5000-1:50000 IHC 1:500-1:2000 IF 1:400-1:1600
<b>Isotyp:</b> IgG1	<b>Berechnete Masse:</b> 95 aa, 11 kDa	
<b>Immunogen Katalognummer:</b> AG8538	<b>Beobachtete Masse:</b> 20 kDa	

## Anwendungen

### Geprüfte Anwendungen:

IF, IHC, WB, ELISA

### Getestete Reaktivität:

Hausschwein, Huhn, Human, Kaninchen, Maus, Ratte

**Hinweis-IHC: Antigenmaskierung mit TE-Puffer pH 9,0 empfohlen. (\*) Wahlweise kann die Antigenmaskierung auch mit Citratpuffer pH 6,0 erfolgen.**

### Positivkontrollen:

**WB:** PC-12-Zellen, Hausschwein-Hirngewebe, Kaninchenhirngewebe, Maus-Cerebellum-Gewebe, Maushirngewebe, Ratten-Cerebellum-Gewebe, Rattenhirngewebe

**IHC:** Maus-Cerebellum-Gewebe, Maushirngewebe

**IF:** PC-12-Zellen,

## Hintergrundinformationen

The FXVD family is a group of small single-span transmembrane proteins characterized by a signature sequence containing an FXVD motif, two conserved glycines and a serine residue. Members of the FXVD family, including FXVD1 (phospholemmann), FXVD2 (gamma subunit of Na,K-ATPase), FXVD3 (Mat8), FXVD4 (CHIF), FXVD5 (RIC), FXVD6 (phosphohippolin) and FXVD7, are tissue specific regulators of the Na,K-ATPase. FXVD6 is primarily expressed in the brain. It modulates the kinetic activity of Na,K-ATPase and has long-term physiological importance in maintaining cation homeostasis. It may play a role in endolymph composition and has a potential important role in neuronal excitability of the CNS during postnatal development and in the adult brain. On the SDS-PAGE FXVD6 migrates with an apparent molecular weight of approximately 20 kDa, which is larger than the calculated molecular weight of 10.5 kDa (PMID: 15193427; 17209044). The gene encoding FXVD6 is located on chromosome 11q23.3, and it might be a susceptibility gene of schizophrenia.

## Lagerung

### Lagerungsbedingungen:

Bei -20°C lagern. Nach dem Versand ein Jahr lang stabil

### Lagerungspuffer:

PBS mit 0.02% Natriumazid und 50% Glycerin pH 7.3.

Aliquotieren ist nicht notwendig bei -20°C Lagerung

**\*\*\* 20ul-Größen enthalten 0.1% BSA**

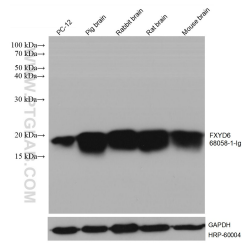
For technical support and original validation data for this product please contact:

T: 1 (888) 4PTGLAB (1-888-478-4522) (toll free in USA), or 1(312) 455-8498 (outside USA)

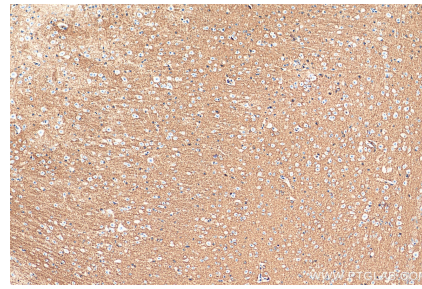
E: [proteintech@ptglab.com](mailto:proteintech@ptglab.com)  
W: [ptglab.com](http://ptglab.com)

**This product is exclusively available under Proteintech Group brand and is not available to purchase from any other manufacturer.**

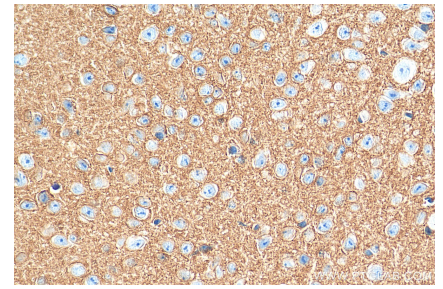
## Ausgewählte Validierungsdaten



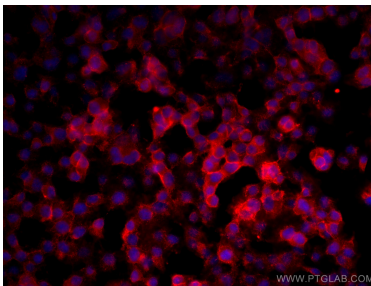
Various lysates were subjected to SDS PAGE followed by western blot with 68058-1-Ig (FXYD6 antibody) at dilution of 1:10000 incubated at room temperature for 1.5 hours. The membrane was stripped and reblotted with HRP-conjugated GAPDH Monoclonal antibody (HRP-60004) as loading control.



Immunohistochemical analysis of paraffin-embedded mouse cerebellum tissue slide using 68058-1-Ig (FXYD6 antibody) at dilution of 1:1000 (under 10x lens). Heat mediated antigen retrieval with Tris-EDTA buffer (pH 9.0).



Immunohistochemical analysis of paraffin-embedded mouse cerebellum tissue slide using 68058-1-Ig (FXYD6 antibody) at dilution of 1:1000 (under 40x lens). Heat mediated antigen retrieval with Tris-EDTA buffer (pH 9.0).



Immunofluorescent analysis of (4% PFA) fixed PC-12 cells using FXYD6 antibody (68058-1-Ig, Clone: 2H1B7) at dilution of 1:800 and CoraLite@594-Conjugated AffiniPure Goat Anti-Mouse IgG(H+L).