

Nur für Forschungszwecke

GEN1 Monoklonaler Antikörper

Katalog-Nr.:68060-1-Ig



Allgemeine Informationen

Katalog-Nr.: 68060-1-Ig	GenBank-Zugangsnummer: NM_182625	Reinigungsmethode: Protein-G-Reinigung
Größe: 150ul , Konzentration: 1000 µg/ml von	GeneID (NCBI): 348654	CloneNo.: 1A10D10
Nanodrop;	Vollständiger Name: Gen homolog 1, endonuclease (Drosophila)	Empfohlene Verdünnungen: WB 1:1000-1:4000
Wirt: Maus	Berechnete Masse: 103 kDa	
Isotyp: IgG1	Beobachtete Masse: 98-100 kDa	
Immunogen Katalognummer: AG31247		

Anwendungen

Geprüfte Anwendungen: WB, ELISA	Positivkontrollen: WB : HEK-293-Zellen, A549-Zellen, Daudi-Zellen, K-562-Zellen, U2OS-Zellen
Getestete Reaktivität: Human	

Hintergrundinformationen

GEN1 is a endonuclease which resolves Holliday junctions (HJs) by the introduction of symmetrically related cuts across the junction point, to produce nicked duplex products in which the nicks can be readily ligated. GEN1 efficiently cleaves both single and double HJs contained within large recombination intermediates.

Lagerung

Lagerungsbedingungen:
Bei -20°C lagern.
Lagerungspuffer:
PBS mit 0.02% Natriumazid und 50% Glycerin pH 7.3.
Aliquotieren ist nicht notwendig bei -20°C Lagerung

*** 20ul-Größen enthalten 0.1% BSA

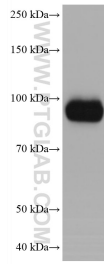
For technical support and original validation data for this product please contact:

T: 1 (888) 4PTGLAB (1-888-478-4522) (toll free in USA), or 1(312) 455-8498 (outside USA)

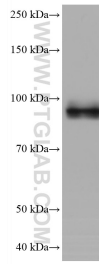
E: proteintech@ptglab.com
W: ptglab.com

This product is exclusively available under Proteintech Group brand and is not available to purchase from any other manufacturer.

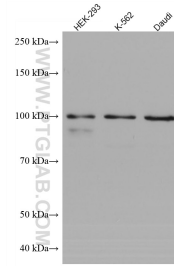
Ausgewählte Validierungsdaten



U2OS cells were subjected to SDS PAGE followed by western blot with 68060-1-Ig (GEN1 antibody) at dilution of 1:2000 incubated at room temperature for 1.5 hours.



A549 cells were subjected to SDS PAGE followed by western blot with 68060-1-Ig (GEN1 antibody) at dilution of 1:2000 incubated at room temperature for 1.5 hours.



Various lysates were subjected to SDS PAGE followed by western blot with 68060-1-Ig (GEN1 antibody) at dilution of 1:2000 incubated at room temperature for 1.5 hours.