

Nur für Forschungszwecke

ARF1 Monoklonaler Antikörper

Katalog-Nr.:68069-1-Ig



Allgemeine Informationen

Katalog-Nr.: 68069-1-Ig	GenBank-Zugangsnummer: BC009247	Reinigungsmethode: Protein-G-Reinigung
Größe: 150ul , Konzentration: 1000 µg/ml von375 Nanodrop;	GeneID (NCBI): 375	CloneNo.: 1C10E3
Wirt: Maus	Vollständiger Name: ADP-ribosylation factor 1	Empfohlene Verdünnungen: WB 1:5000-1:50000 IF 1:400-1:1600
Isotyp: IgG1	Berechnete Masse: 21 kDa	
Immunogen Katalognummer: AG28021	Beobachtete Masse: 18-21 kDa	

Anwendungen

Geprüfte Anwendungen:

IF, WB, ELISA

Getestete Reaktivität:

Human, Kaninchen, Maus, Ratte

Positivkontrollen:

WB : A431-Zellen, HEK-293-Zellen, HeLa-Zellen,
HepG2-Zellen, Kaninchenhirngewebe, LNCaP-Zellen,
Maushirngewebe, Rattenhirngewebe

IF : HeLa-Zellen,

Hintergrundinformationen

ADP-ribosylation factors (ARFs) are members of the ARF family of GTP-binding proteins of the Ras superfamily. ARFs bind and regulate GTP/GDP cycle by alternating between the active GTP-bound and inactive GDP-bound conformations. ARF family proteins are essential and ubiquitous in eukaryotes. Six highly conserved members of the family have been identified in mammalian cells. They function in vesicular traffic and actin remodelling and other bioprocesses in cells. The ARF1 protein is localized to the Golgi apparatus and has a central role in intra-Golgi transport. It mainly functions in coat recruitment.(PMID: 7759471, PMID: 16042562).

Lagerung

Lagerungsbedingungen:

Bei -20°C lagern. Nach dem Versand ein Jahr lang stabil

Lagerungspuffer:

PBS mit 0.02% Natriumazid und 50% Glycerin pH 7.3.

Aliquotieren ist nicht notwendig bei -20°C Lagerung

*** 20ul-Größen enthalten 0.1% BSA

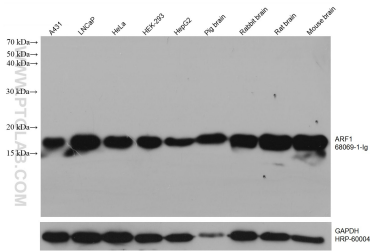
For technical support and original validation data for this product please contact:

T: 1 (888) 4PTGLAB (1-888-478-4522) (toll free
in USA), or 1(312) 455-8498 (outside USA)

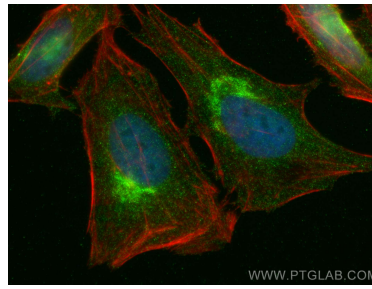
E: proteintech@ptglab.com
W: ptglab.com

This product is exclusively available under Proteintech Group brand and is not available to purchase from any other manufacturer.

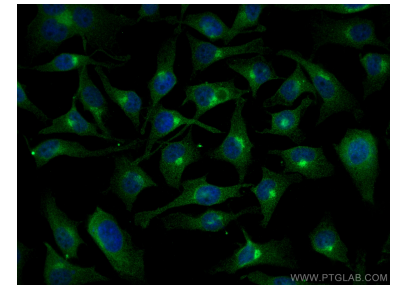
Ausgewählte Validierungsdaten



Various lysates were subjected to SDS PAGE followed by western blot with 68069-1-Ig (ARF1 antibody) at dilution of 1:10000 incubated at room temperature for 1.5 hours. The membrane was stripped and reblotted with HRP-conjugated GAPDH Monoclonal antibody (HRP-60004) as loading control.



Immunofluorescent analysis of (4% PFA) fixed HeLa cells using ARF1 antibody (68069-1-Ig, Clone: 1C10E3) at dilution of 1:800 and CoraLite@488-Conjugated AffiniPure Goat Anti-Mouse IgG(H+L), CL594-phalloidin (red).



Immunofluorescent analysis of (4% PFA) fixed HeLa cells using ARF1 antibody (68069-1-Ig, Clone: 1C10E3) at dilution of 1:400 and CoraLite@488-Conjugated AffiniPure Goat Anti-Mouse IgG(H+L).