

Nur für Forschungszwecke

PTPRF Monoklonaler Antikörper

Katalog-Nr.:68070-1-Ig



Allgemeine Informationen

Katalog-Nr.: 68070-1-Ig	GenBank-Zugangsnummer: BC048768	Reinigungsmethode: Protein-G-Reinigung
Größe: 150ul , Konzentration: 1000 µg/ml von5792 Nanodrop;	GeneID (NCBI): 5792	CloneNo.: 2D12G7
Wirt: Maus	Vollständiger Name: protein tyrosine phosphatase, receptor type, F	Empfohlene Verdünnungen: WB 1:1000-1:6000
Isotyp: IgG1	Berechnete Masse: 1898 aa, 212 kDa	
Immunogen Katalognummer: AG25441	Beobachtete Masse: 150, 213 kDa	

Anwendungen

Geprüfte Anwendungen:
WB, ELISA

Getestete Reaktivität:
Human

Positivkontrollen:

WB : HeLa-Zellen, 4T1-Zellen, A549-Zellen, Jurkat-Zellen, LNCaP-Zellen, MCF-7-Zellen, U2OS-Zellen

Hintergrundinformationen

Lagerung

Lagerungsbedingungen:
Bei -20°C lagern.

Lagerungspuffer:
PBS mit 0.02% Natriumazid und 50% Glycerin pH 7.3.

Aliquotieren ist nicht notwendig bei -20°C Lagerung

***** 20ul-Größen enthalten 0.1% BSA**

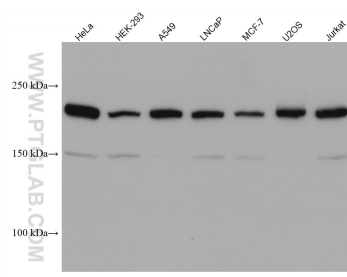
For technical support and original validation data for this product please contact:

T: 1 (888) 4PTGLAB (1-888-478-4522) (toll free
in USA), or 1(312) 455-8498 (outside USA)

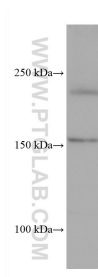
E: proteintech@ptglab.com
W: ptglab.com

This product is exclusively available under Proteintech Group brand and is not available to purchase from any other manufacturer.

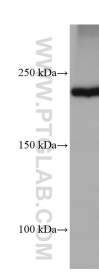
Ausgewählte Validierungsdaten



Various lysates were subjected to SDS PAGE followed by western blot with 68070-1-Ig (PTPRF antibody) at dilution of 1:3000 incubated at room temperature for 1.5 hours.



HSC-T6 cells were subjected to SDS PAGE followed by western blot with 68070-1-Ig (PTPRF antibody) at dilution of 1:3000 incubated at room temperature for 1.5 hours.



4T1 cells were subjected to SDS PAGE followed by western blot with 68070-1-Ig (PTPRF antibody) at dilution of 1:3000 incubated at room temperature for 1.5 hours.