

Nur für Forschungszwecke

FATP2 Monoklonaler Antikörper

Katalog-Nr.:68074-1-Ig



Allgemeine Informationen

Katalog-Nr.: 68074-1-Ig	GenBank-Zugangsnummer: BC057770	Reinigungsmethode: Protein-A-Reinigung
Größe: 150ul , Konzentration: 1000 µg/ml von11001 Nanodrop;	GeneID (NCBI): 11001	CloneNo.: 2C10D7
Wirt: Maus	Vollständiger Name: solute carrier family 27 (fatty acid transporter), member 2	Empfohlene Verdünnungen: WB 1:5000-1:50000 IHC 1:250-1:1000
Isotyp: IgG1	Berechnete Masse: 567 aa, 65 kDa	
Immunogen Katalognummer: AG5390	Beobachtete Masse: 70 kDa	

Anwendungen

Geprüfte Anwendungen:

IHC, WB, ELISA

Getestete Reaktivität:

Human, Ratte

Hinweis-IHC: Antigendemaskierung mit TE-Puffer pH 9,0 empfohlen. (*) Wahlweise kann die Antigendemaskierung auch mit Citratpuffer pH 6,0 erfolgen.

Positivkontrollen:

WB : A549-Zellen, HeLa-Zellen, HepG2-Zellen, LNCaP-Zellen, Rattenlebergewebe

IHC : humanes Nierengewebe,

Hintergrundinformationen

FATP2 is a member of the FATP family which functions in lipid and bile metabolism. It is a 70-kDa protein predominantly expressed in liver and kidney. Kidney FATP2 is localized exclusively to proximal tubule epithelial cells along the apical but not the basolateral membrane, and regulates lipoapoptosis. FATP2 is involved in metabolism-related diseases including nonalcoholic fatty liver disease (NAFLD) and type 2 diabetes mellitus (T2DM), and is a potential clinical biomarker and therapeutic target.

Lagerung

Lagerungsbedingungen:

Bei -20°C lagern. Nach dem Versand ein Jahr lang stabil

Lagerungspuffer:

PBS mit 0.02% Natriumazid und 50% Glycerin pH 7.3.

Aliquotieren ist nicht notwendig bei -20°C Lagerung

*** 20ul-Größen enthalten 0.1% BSA

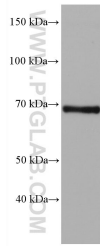
For technical support and original validation data for this product please contact:

T: 1 (888) 4PTGLAB (1-888-478-4522) (toll free in USA), or 1(312) 455-8498 (outside USA)

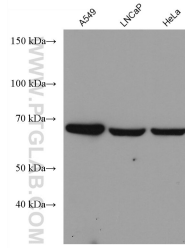
E: proteintech@ptglab.com
W: ptglab.com

This product is exclusively available under Proteintech Group brand and is not available to purchase from any other manufacturer.

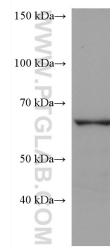
Ausgewählte Validierungsdaten



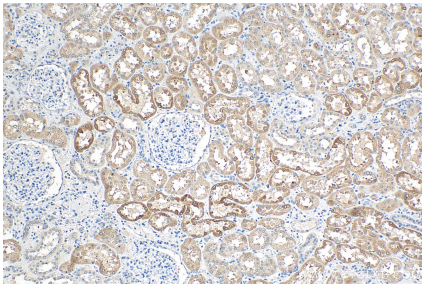
rat liver tissue were subjected to SDS PAGE followed by western blot with 68074-1-Ig (FATP2 antibody) at dilution of 1:1000 incubated at room temperature for 1.5 hours.



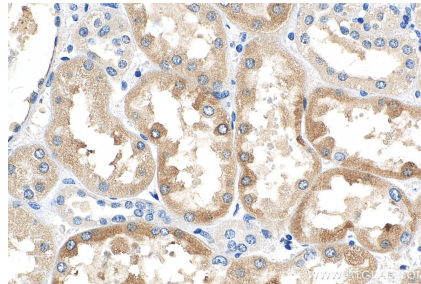
Various lysates were subjected to SDS PAGE followed by western blot with 68074-1-Ig (SLC27A2 antibody) at dilution of 1:10000 incubated at room temperature for 1.5 hours.



HepG2 cells were subjected to SDS PAGE followed by western blot with 68074-1-Ig (SLC27A2 antibody) at dilution of 1:10000 incubated at room temperature for 1.5 hours.



Immunohistochemical analysis of paraffin-embedded human kidney tissue slide using 68074-1-Ig (FATP2 antibody) at dilution of 1:500 (under 10x lens). Heat mediated antigen retrieval with Tris-EDTA buffer (pH 9.0).



Immunohistochemical analysis of paraffin-embedded human kidney tissue slide using 68074-1-Ig (FATP2 antibody) at dilution of 1:500 (under 40x lens). Heat mediated antigen retrieval with Tris-EDTA buffer (pH 9.0).