

Nur für Forschungszwecke

Annexin VI Monoklonaler Antikörper

Katalog-Nr.:68086-1-Ig



Allgemeine Informationen

Katalog-Nr.: 68086-1-Ig	GenBank-Zugangsnummer: BC017046	Reinigungsmethode: Protein-G-Reinigung
Größe: 150ul , Konzentration: 500 µg/ml von Nanodrop;	GeneID (NCBI): 309	CloneNo.: 2H7G7
Wirt: Maus	Vollständiger Name: annexin A6	Empfohlene Verdünnungen: WB 1:2000-1:10000 IF 1:200-1:800
Isotyp: IgG1	Berechnete Masse: 673 aa, 76 kDa	
Immunogen Katalognummer: AG3263	Beobachtete Masse: 67 kDa	

Anwendungen

Geprüfte Anwendungen:

IF, WB, ELISA

Getestete Reaktivität:

Hausschwein, Human, Kaninchen, Maus, Ratte

Positivkontrollen:

WB : LNCaP-Zellen, Hausschwein-Hirngewebe, HeLa-Zellen, humanes Plazenta-Gewebe, Kaninchenhirngewebe, Maushirngewebe, Rattenhirngewebe

IF : HepG2-Zellen,

Hintergrundinformationen

ANXA6, also called CBP68, or 67 kDa calelectrin, belongs to a family of calcium-dependent membrane and phospholipid binding proteins. Several members of the annexin family have been implicated in membrane-related events along exocytotic and endocytotic pathways. The annexin VI gene is approximately 60 kbp long and contains 26 exons. It encodes a protein of about 68 kDa that consists of eight 68-amino acid repeats separated by linking sequences of variable lengths. It is highly similar to human annexins I and II sequences, each of which contain four such repeats. Annexin VI has been implicated in mediating the endosome aggregation and vesicle fusion in secreting epithelia during exocytosis.

Lagerung

Lagerungsbedingungen:

Bei -20°C lagern. Nach dem Versand ein Jahr lang stabil

Lagerungspuffer:

PBS mit 0.02% Natriumazid und 50% Glycerin pH 7.3.

Aliquotieren ist nicht notwendig bei -20°C Lagerung

*** 20ul-Größen enthalten 0.1% BSA

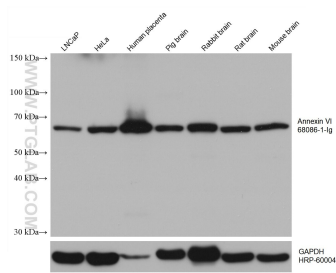
For technical support and original validation data for this product please contact:

T: 1 (888) 4PTGLAB (1-888-478-4522) (toll free
in USA), or 1(312) 455-8498 (outside USA)

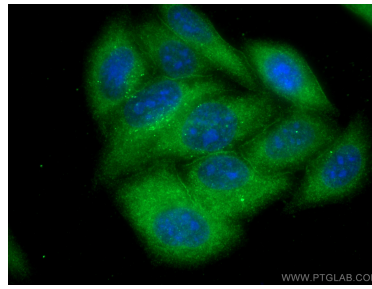
E: proteintech@ptglab.com
W: ptglab.com

This product is exclusively available under Proteintech Group brand and is not available to purchase from any other manufacturer.

Ausgewählte Validierungsdaten



Various lysates were subjected to SDS PAGE followed by western blot with 68086-1-Ig (Annexin VI antibody) at dilution of 1:5000 incubated at room temperature for 1.5 hours. The membrane was stripped and reblotted with HRP-conjugated GAPDH Monoclonal antibody (HRP-60004) as loading control.



Immunofluorescent analysis of (-20°C Methanol) fixed HepG2 cells using Annexin VI antibody (68086-1-Ig, Clone: 2H7G7) at dilution of 1:400 and CoraLite® 488-Conjugated AffiniPure Goat Anti-Mouse IgG(H+L).