

Nur für Forschungszwecke

mCherry Monoklonaler Antikörper

Katalog-Nr.: 68088-1-Ig



Allgemeine Informationen

Katalog-Nr.: 68088-1-Ig	GenBank-Zugangsnummer: GeneID (NCBI):	Reinigungsmethode: Protein-G-Reinigung
Größe: 150ul, Konzentration: 1000 µg/ml von Nanodrop;	Vollständiger Name: Berechnete Masse: 27 kDa	CloneNo.: 1B3C6
Wirt: Maus		Empfohlene Verdünnungen: WB 1:2000-1:10000
Isotyp: IgG1		
Immunogen Katalognummer: AG25320		

Anwendungen

Geprüfte Anwendungen: WB, ELISA	Positivkontrollen: WB : HEK-293-Zellen,
Getestete Reaktivität: Rekombinantes Protein	

Hintergrundinformationen

mCherry is a fluorophore (a fluorescent protein) used in biotechnology as a tracer to follow the flow of fluids, as a marker when tagged to molecules and cell components. mCherry is the second generation monomeric red fluorescent protein that have improved brightness and photostability. mCherry and the majority of red fluorescent proteins derive from a protein isolated from *Discosoma* sp. mCherry is a monomeric fluorescent construct with peak absorption/emission at 587 nm and 610 nm, respectively.

Lagerung

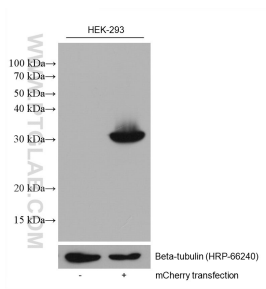
Lagerungsbedingungen:
Bei -20°C lagern.
Lagerungspuffer:
PBS mit 0.02% Natriumazid und 50% Glycerin pH 7.3.
Aliquotieren ist nicht notwendig bei -20°C Lagerung

*** 20ul-Größen enthalten 0.1% BSA

For technical support and original validation data for this product please contact:
T: 1 (888) 4PTGLAB (1-888-478-4522) (toll free in USA), or 1(312) 455-8498 (outside USA)
E: proteintech@ptglab.com
W: ptglab.com

This product is exclusively available under Proteintech Group brand and is not available to purchase from any other manufacturer.

Ausgewählte Validierungsdaten



HEK-293 cells were subjected to SDS PAGE followed by western blot with 68088-1-Ig (mCherry antibody) at dilution of 1:5000 incubated at room temperature for 1.5 hours.