

## Allgemeine Informationen

<b>Katalog-Nr.:</b> 68096-1-Ig	<b>GenBank-Zugangsnummer:</b> BC113674	<b>Reinigungsmethode:</b> Protein-G-Reinigung
<b>Größe:</b> 150ul, Konzentration: 1000 µg/ml von 6386 Nanodrop;	<b>GeneID (NCBI):</b> von 6386	<b>CloneNo.:</b> 2B1A9
<b>Wirt:</b> Maus	<b>Vollständiger Name:</b> syndecan binding protein (syntenin)	<b>Empfohlene Verdünnungen:</b> WB 1:2000-1:10000 IHC 1:250-1:1000
<b>Isotyp:</b> IgG1	<b>Berechnete Masse:</b> 298 aa, 32 kDa	
<b>Immunogen Katalognummer:</b> AG18078	<b>Beobachtete Masse:</b> 30 kDa	

## Anwendungen

<b>Geprüfte Anwendungen:</b> IHC, WB, ELISA	<b>Positivkontrollen:</b> WB: HeLa-Zellen, Jurkat-Zellen, U2OS-Zellen IHC: humanes malignes Melanomgewebe,
<b>In Publikationen genannte Anwendungen:</b> WB	
<b>Getestete Reaktivität:</b> Human	
<b>Zitierte Arten:</b> Human	
<b>Hinweis-IHC: Antigendemaskierung mit TE-Puffer pH 9,0 empfohlen. (*) Wahlweise kann die Antigendemaskierung auch mit Citratpuffer pH 6,0 erfolgen.</b>	

## Hintergrundinformationen

Syntenin-1, also known as SDCBP (syndecan binding protein) and MDA-9 (melanoma differentiation-associated protein 9), was initially identified as a molecule linking syndecan-mediated signaling to the cytoskeleton. Syntenin-1 is a PDZ-domain-containing molecule that has many interaction partners, and regulates transmembrane-receptor trafficking, cell adhesion, tumor-cell metastasis and neuronal-synapse function. Syntenin-1 is primarily localized to membrane-associated adherens junctions and focal adhesions but is also found at the endoplasmic reticulum and nucleus.

## Bemerkenswerte Veröffentlichungen

Verfasser	Pubmed ID	Journal	Anwendung
Xiaoman Zhu	36096985	Cell Death Dis	WB

## Lagerung

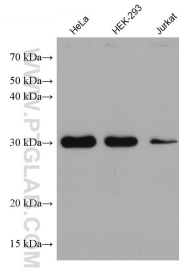
**Lagerungsbedingungen:**  
Bei -20°C lagern.  
**Lagerungspuffer:**  
PBS mit 0.02% Natriumazid und 50% Glycerin pH 7.3.  
Aliquotieren ist nicht notwendig bei -20°C Lagerung

\*\*\* 20ul-Größen enthalten 0.1% BSA

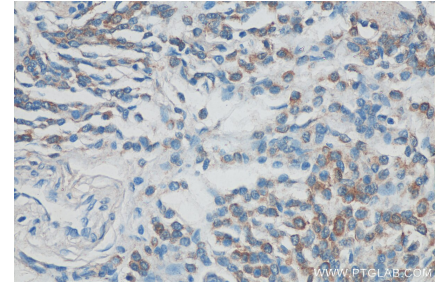
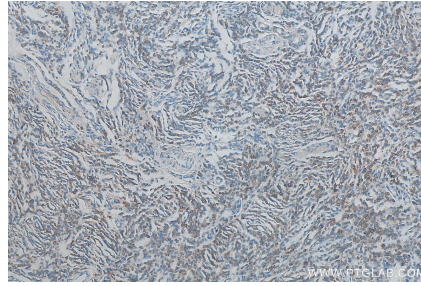
For technical support and original validation data for this product please contact:  
 T: 1 (888) 4PTGLAB (1-888-478-4522) (toll free in USA), or 1(312) 455-8498 (outside USA)  
 E: [proteintech@ptglab.com](mailto:proteintech@ptglab.com)  
 W: [ptglab.com](http://ptglab.com)

This product is exclusively available under Proteintech Group brand and is not available to purchase from any other manufacturer.

## Ausgewählte Validierungsdaten



Various lysates were subjected to SDS PAGE followed by western blot with 68096-1-Ig (SDCBP antibody) at dilution of 1:5000 incubated at room temperature for 1.5 hours.



Immunohistochemical analysis of paraffin-embedded human malignant melanoma tissue slide using 68096-1-Ig (Syntenin-1 antibody) at dilution of 1:500 (under 40x lens). Heat mediated antigen retrieval with Tris-EDTA buffer (pH 9.0).