

Nur für Forschungszwecke

PRAME Monoklonaler Antikörper

Katalog-Nr.:68097-1-Ig

Vorgestelltes Produkt



Allgemeine Informationen

Katalog-Nr.: 68097-1-Ig	GenBank-Zugangsnummer: BC014074	Reinigungsmethode: Protein-A-Reinigung
Größe: 150ul , Konzentration: 1000 µg/ml von23532 Nanodrop;	GeneID (NCBI): Vollständiger Name: preferentially expressed antigen in melanoma	CloneNo.: 1E9G9
Wirt: Maus	Berechnete Masse: 509 aa, 58 kDa	Empfohlene Verdünnungen: WB 1:5000-1:50000
Isotyp: IgG2b	Beobachtete Masse: 50 kDa	
Immunogen Katalognummer: AG1906		

Anwendungen

Geprüfte Anwendungen:
WB, ELISA
Getestete Reaktivität:
Human, Maus, Ratte

Positivkontrollen:

WB : A549-Zellen, A375-Zellen, HeLa-Zellen, K-562-Zellen, Maushodengewebe, U2OS-Zellen

Hintergrundinformationen

The PRAME (preferentially expressed antigen of melanoma) gene was previously shown to be overexpressed in ovarian/primary peritoneal serous carcinoma compared with malignant mesothelioma using gene expression arrays. It is considered a melanocyte differentiation antigen which is overexpressed in both solid and hematologic tumors. In normal tissue, a very low level of PRAME expression is found in normal testis, adrenals, ovary and endometrium. A high level of PRAME expression has been reported for several solid tumors, including ovarian cancer, breast cancer, lung cancer and melanomas, medulloblastoma, sarcomas, head and neck cancers, neuroblastoma, renal cancer, and Wilms'tumor. As a nuclear transcriptional repressor protein, PRAME binds to retinoic acid receptor α , thereby inhibiting retinoic acid induced differentiation, growth arrest, and apoptosis.

Lagerung

Lagerungsbedingungen:
Bei -20°C lagern. Nach dem Versand ein Jahr lang stabil
Lagerungspuffer:
PBS mit 0.02% Natriumazid und 50% Glycerin pH 7.3.
Aliquotieren ist nicht notwendig bei -20°C Lagerung

*** 20ul-Größen enthalten 0.1% BSA

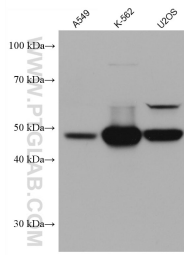
For technical support and original validation data for this product please contact:

T: 1 (888) 4PTGLAB (1-888-478-4522) (toll free
in USA), or 1(312) 455-8498 (outside USA)

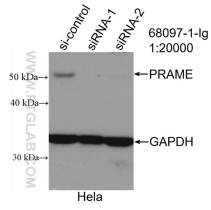
E: proteintech@ptglab.com
W: ptglab.com

This product is exclusively available under Proteintech Group brand and is not available to purchase from any other manufacturer.

Ausgewählte Validierungsdaten



Various lysates were subjected to SDS PAGE followed by western blot with 68097-1-Ig (PRAME antibody) at dilution of 1:10000 incubated at room temperature for 1.5 hours.



WB result of PRAME antibody (68097-1-Ig; 1:20000; incubated at room temperature for 1.5 hours) with sh-Control and sh-PRAME transfected HeLa cells.