

Bcl2 Monoklonaler Antikörper

Katalog-Nr.: 68103-1-Ig

Vorgestelltes Produkt

15 Publikationen

Allgemeine Informationen

Katalog-Nr.: 68103-1-Ig	GenBank-Zugangsnummer: NM-009741	Reinigungsmethode: Protein-A-Reinigung
Größe: 150ul, Konzentration: 1000 µg/ml von 12043 Nanodrop;	GeneID (NCBI): 12043	CloneNo.: 1B3F7
Wirt: Maus	Vollständiger Name: B-cell leukemia/lymphoma 2	Empfohlene Verdünnungen: WB 1:2000-1:10000 IF 1:400-1:1600
Isotyp: IgG1	Berechnete Masse: 26 kDa	
Immunogen Katalognummer: AG24261	Beobachtete Masse: 26 kDa	

Anwendungen

Geprüfte Anwendungen:

IF, WB, ELISA

In Publikationen genannte Anwendungen:

IHC, WB

Getestete Reaktivität:

Human, Maus, Ratte

Zitierte Arten:

Human, Maus, Ratte

Positivkontrollen:

WB: HeLa-Zellen, C2C12-Zellen, HEK-293-Zellen, Jurkat-Zellen, Maushirngewebe, Mausmilzgewebe, NIH/3T3-Zellen, Rattenhirngewebe, Rattenmilzgewebe, RAW 264.7-Zellen

IF: NIH/3T3-Zellen,

Hintergrundinformationen

Bcl2 is a member of the B cell lymphoma 2 protein family. Members of this family regulate cell death in multiple cell types and can have either proapoptotic or antiapoptotic activities. The protein encoded by this gene inhibits mitochondrial-mediated apoptosis. This protein is an integral outer mitochondrial membrane protein that functions as part of signaling pathway that controls mitochondrial permeability in response to apoptotic stimuli. This protein may also play a role in neuron cell survival and autophagy. Abnormal expression and chromosomal translocations of this gene are associated with cancer progression in numerous tissues.

Bemerkenswerte Veröffentlichungen

Verfasser	Pubmed ID	Journal	Anwendung
Yujie Zhong	36501024	Nutrients	WB
Gaopeng Guan	36333115	Small	WB
Dalong Wang	36331006	Phytother Res	WB

Lagerung

Lagerungsbedingungen:

Bei -20°C lagern. Nach dem Versand ein Jahr lang stabil

Lagerungspuffer:

PBS mit 0.02% Natriumazid und 50% Glycerin pH 7.3.

Aliquotieren ist nicht notwendig bei -20°C Lagerung

*** 20ul-Größen enthalten 0.1% BSA

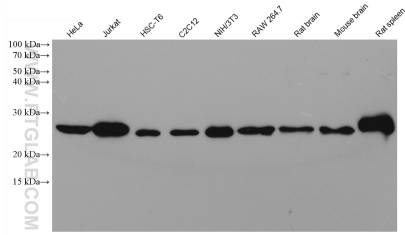
For technical support and original validation data for this product please contact:

T: 1 (888) 4PTGLAB (1-888-478-4522) (toll free in USA), or 1(312) 455-8498 (outside USA)

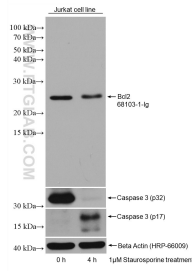
E: proteintech@ptglab.com
W: ptglab.com

This product is exclusively available under Proteintech Group brand and is not available to purchase from any other manufacturer.

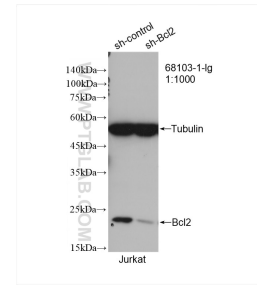
Ausgewählte Validierungsdaten



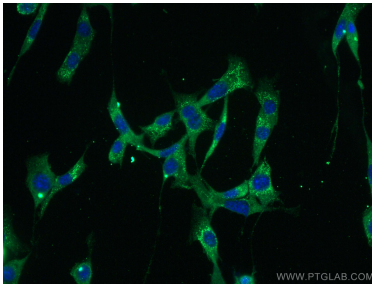
Various lysates were subjected to SDS PAGE followed by western blot with 68103-1-Ig (Bcl2 antibody) at dilution of 1:10000 incubated at room temperature for 1.5 hours.



Jurkat and staurosporine treated Jurkat cells were subjected to SDS PAGE followed by western blot with 68103-1-Ig (Bcl2 antibody) at dilution of 1:10000 incubated at room temperature for 1.5 hours. The membrane was stripped and blotted with Caspase 3 antibody followed by re-blotting with beta actin antibody as loading control.



WB result of Bcl2 antibody (68103-1-Ig: 1:1000; incubated at room temperature for 1.5 hours) with sh-Control and sh-Bcl2 transfected Jurkat cells.



Immunofluorescent analysis of (-20°C Ethanol) fixed NIH/3T3 cells using Bcl2 antibody (68103-1-Ig, Clone: 1B3F7) at dilution of 1:800 and CoraLite®488-Conjugated AffiniPure Goat Anti-Mouse IgG(H+L).