

Nur für Forschungszwecke

# REEP5 Monoklonaler Antikörper

Katalog-Nr.:68119-1-Ig

Vorgestelltes Produkt



## Allgemeine Informationen

<b>Katalog-Nr.:</b> 68119-1-Ig	<b>GenBank-Zugangsnummer:</b> BC065926	<b>Reinigungsmethode:</b> Protein-G-Reinigung
<b>Größe:</b> 150ul , Konzentration: 1000 µg/ml von7905 Nanodrop;	<b>GeneID (NCBI):</b> 1505	<b>CloneNo.:</b> 1H8D8
<b>Wirt:</b> Maus	<b>Vollständiger Name:</b> receptor accessory protein 5	<b>Empfohlene Verdünnungen:</b> WB 1:20000-1:100000 IHC 1:5000-1:20000
<b>Isotyp:</b> IgG1	<b>Berechnete Masse:</b> 21 kDa	
<b>Immunogen Katalognummer:</b> AG6229	<b>Beobachtete Masse:</b> 18 kDa	

## Anwendungen

### Geprüfte Anwendungen:

IHC, WB, ELISA

### Getestete Reaktivität:

Hausschwein, Human

**Hinweis-IHC: Antigendemaskierung mit TE-Puffer pH 9,0 empfohlen. (\*) Wahlweise kann die Antigendemaskierung auch mit Citratpuffer pH 6,0 erfolgen.**

### Positivkontrollen:

WB : HEK-293-Zellen, Hausschwein-Herzgewebe, HeLa-Zellen, Jurkat-Zellen, K-562-Zellen, LNCaP-Zellen, MOLT-4-Zellen

IHC : humanes Kolonkarzinomgewebe,

## Hintergrundinformationen

REEP5 (receptor expression-enhancing protein 5), also named as C5orf18, DP1 or TB2, is a membrane protein belonging to DP1/Yop1p protein family. All REEP proteins contain a conserved TB2/DP1, HVA22 domain which is involved in intracellular trafficking and secretion (PMID: 19123125). REEP5 is expressed in circumvallate papillae and testis, and may have the function to influence functional cell surface expression of taste receptors (PMID: 16720576). REEP5 can interact with atlastins (ATL1 and ATL2) which are involved in modulating the structure of ER network (PMID: 19665976).

## Lagerung

### Lagerungsbedingungen:

Bei -20°C lagern. Nach dem Versand ein Jahr lang stabil

### Lagerungspuffer:

PBS mit 0.02% Natriumazid und 50% Glycerin pH 7.3.

Aliquotieren ist nicht notwendig bei -20°C Lagerung

\*\*\* 20ul-Größen enthalten 0.1% BSA

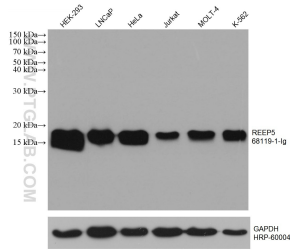
For technical support and original validation data for this product please contact:

T: 1 (888) 4PTGLAB (1-888-478-4522) (toll free in USA), or 1(312) 455-8498 (outside USA)

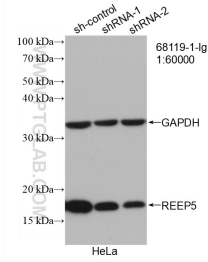
E: proteintech@ptglab.com  
W: ptglab.com

This product is exclusively available under Proteintech Group brand and is not available to purchase from any other manufacturer.

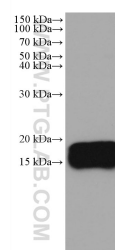
## Ausgewählte Validierungsdaten



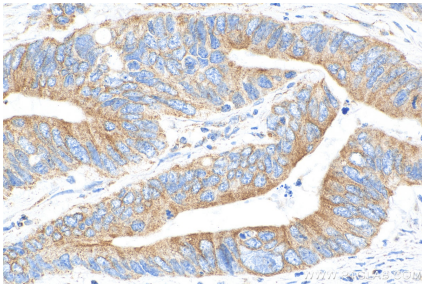
Various lysates were subjected to SDS PAGE followed by western blot with 68119-1-Ig (REEP5 antibody) at dilution of 1:100000 incubated at room temperature for 1.5 hours. The membrane was stripped and reblotted with HRP-conjugated GAPDH Monoclonal antibody (HRP-60004) as loading control.



WB result of REEP5 antibody (68119-1-Ig; 1:60000; incubated at room temperature for 1.5 hours) with sh-Control and sh-REEP5 transfected HeLa cells.



pig heart tissue were subjected to SDS PAGE followed by western blot with 68119-1-Ig (REEP5 antibody) at dilution of 1:100000 incubated at room temperature for 1.5 hours.



Immunohistochemical analysis of paraffin-embedded human colon cancer tissue slide using 68119-1-Ig (REEP5 antibody) at dilution of 1:10000 (under 10x lens). Heat mediated antigen retrieval with Tris-EDTA buffer (pH 9.0).