

## Allgemeine Informationen

<b>Katalog-Nr.:</b> 68120-1-Ig	<b>GenBank-Zugangsnummer:</b> BC028720	<b>Reinigungsmethode:</b> Protein-A-Reinigung
<b>Größe:</b> 150ul , Konzentration: 1000 µg/ml von1756 Nanodrop;	<b>GeneID (NCBI):</b> 150000	<b>CloneNo.:</b> 1G12E6
<b>Wirt:</b> Maus	<b>Vollständiger Name:</b> dystrophin	<b>Empfohlene Verdünnungen:</b> WB 1:5000-1:50000 IHC 1:1000-1:4000 IF 1:200-1:800
<b>Isotyp:</b> IgG2a	<b>Berechnete Masse:</b> 3685 aa, 427 kDa	
<b>Immunogen Katalognummer:</b> AG4392	<b>Beobachtete Masse:</b> 70 kDa, 430 kDa	

## Anwendungen

### Geprüfte Anwendungen:

IF, IHC, WB, ELISA

### Getestete Reaktivität:

Human, Maus, Ratte

**Hinweis-IHC: Antigendemaskierung mit TE-Puffer pH 9,0 empfohlen. (\*) Wahlweise kann die Antigendemaskierung auch mit Citratpuffer pH 6,0 erfolgen.**

### Positivkontrollen:

**WB:** Rattenhirngewebe, HeLa-Zellen, HepG2-Zellen, Maushirngewebe, Rattenherzgewebe

**IHC:** Ratten-Skelettmuskelgewebe, Maus-Skelettmuskelgewebe

**IF:** Maus-Skelettmuskelgewebe, Rattenherzgewebe

## Hintergrundinformationen

Dystrophin (DMD or BMD) is a large muscle protein whose mutations cause Duchenne muscular dystrophy (DMD) and Becker muscular dystrophy (BMD), the childhood neuromuscular disorders that result in progressive muscle weakness, respiratory difficulties and cardiovascular dysfunction. Dystrophin is a crucial component of the dystrophin-glycoprotein complex which is essential for muscle membrane integrity and stability. Dystrophin is located on the cytoplasmic face of the sarcolemma and connects the cytoskeletal network to the sarcolemma and extracellular matrix. Multiple isoforms of dystrophin exist due to the alternative splicing, with a wide range of MW (69-72, 110-143, 271, 426 kDa). Most tissues contain transcripts of several isoforms.

## Lagerung

### Lagerungsbedingungen:

Bei -20°C lagern. Nach dem Versand ein Jahr lang stabil

### Lagerungspuffer:

PBS mit 0.02% Natriumazid und 50% Glycerin pH 7.3.

Aliquotieren ist nicht notwendig bei -20°C Lagerung

**\*\*\* 20ul-Größen enthalten 0.1% BSA**

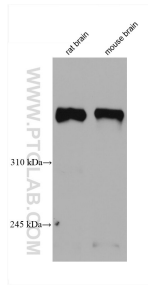
For technical support and original validation data for this product please contact:

T: 1 (888) 4PTGLAB (1-888-478-4522) (toll free in USA), or 1(312) 455-8498 (outside USA)

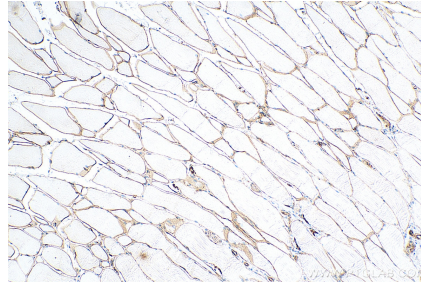
E: [proteintech@ptglab.com](mailto:proteintech@ptglab.com)  
W: [ptglab.com](http://ptglab.com)

**This product is exclusively available under Proteintech Group brand and is not available to purchase from any other manufacturer.**

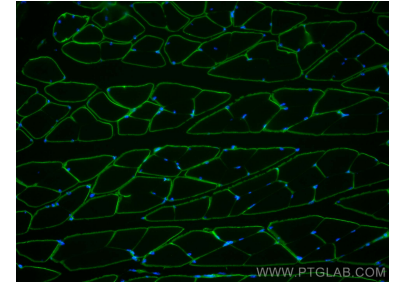
## Ausgewählte Validierungsdaten



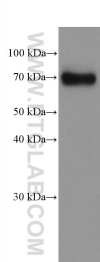
Various lysates were subjected to SDS PAGE followed by western blot with 68120-1-Ig (Dystrophin antibody) at dilution of 1:10000 incubated at room temperature for 1.5 hours.



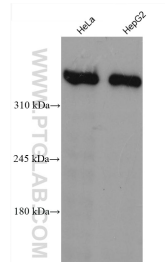
Immunohistochemical analysis of paraffin-embedded rat skeletal muscle tissue slide using 68120-1-Ig (Dystrophin antibody) at dilution of 1:2000 (under 10x lens). Heat mediated antigen retrieval with Tris-EDTA buffer (pH 9.0).



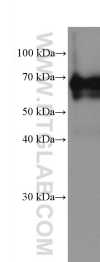
Immunofluorescent analysis of (4% PFA) fixed mouse skeletal muscle tissue using Dystrophin antibody (68120-1-Ig, Clone: 1G12E6) at dilution of 1:400 and CoraLite®488-Conjugated AffiniPure Goat Anti-Mouse IgG(H+L).



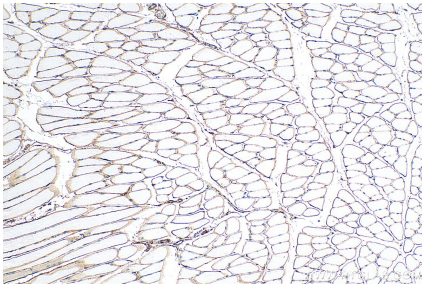
HeLa cells were subjected to SDS PAGE followed by western blot with 68120-1-Ig (Dystrophin antibody) at dilution of 1:10000 incubated at room temperature for 1.5 hours.



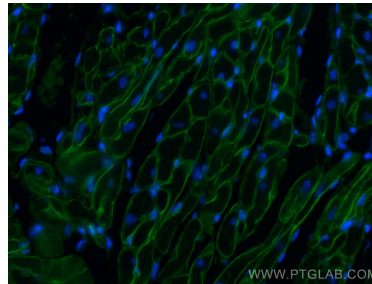
Various lysates were subjected to SDS PAGE followed by western blot with 68120-1-Ig (DMD antibody) at dilution of 1:10000 incubated at room temperature for 1.5 hours.



rat heart tissue were subjected to SDS PAGE followed by western blot with 68120-1-Ig (Dystrophin antibody) at dilution of 1:10000 incubated at room temperature for 1.5 hours.



Immunohistochemical analysis of paraffin-embedded mouse skeletal muscle tissue slide using 68120-1-Ig (Dystrophin antibody) at dilution of 1:2000 (under 10x lens). Heat mediated antigen retrieval with Tris-EDTA buffer (pH 9.0).



Immunofluorescent analysis of (4% PFA) fixed rat heart tissue using Dystrophin antibody (68120-1-Ig, Clone: 1G12E6) at dilution of 1:400 and CoraLite®488-Conjugated AffiniPure Goat Anti-Mouse IgG(H+L).