

Nur für Forschungszwecke

# MAN1B1 Monoklonaler Antikörper

Katalog-Nr.:68121-1-Ig



## Allgemeine Informationen

<b>Katalog-Nr.:</b> 68121-1-Ig	<b>GenBank-Zugangsnummer:</b> BC002953	<b>Reinigungsmethode:</b> Protein-A-Reinigung
<b>Größe:</b> 150ul , Konzentration: 1000 µg/ml von11253	<b>GeneID (NCBI):</b> 11253	<b>CloneNo.:</b> 3C9F10
<b>Nanodrop;</b>	<b>Vollständiger Name:</b> mannosidase, alpha, class 1B, member 1	<b>Empfohlene Verdünnungen:</b> WB 1:1000-1:6000
<b>Wirt:</b> Maus	<b>Berechnete Masse:</b> 80 kDa	
<b>Isotyp:</b> IgG2b	<b>Beobachtete Masse:</b> 80 kDa	
<b>Immunogen Katalognummer:</b> AG28302		

## Anwendungen

<b>Geprüfte Anwendungen:</b> WB, ELISA	<b>Positivkontrollen:</b> WB : HeLa-Zellen, HEK-293-Zellen, HepG2-Zellen
<b>Getestete Reaktivität:</b> Human	

## Hintergrundinformationen

MAN1B1, also known as ERMAN1, MANA-ER, belongs to the glycosyl hydrolase 47 family. MAN1B1 is involved in glycoprotein quality control targeting of misfolded glycoproteins for degradation, specifically converting Man9GlcNAc to Man8GlcNAc isomer B. At high enzyme concentrations, it further trims the carbohydrates to Man5-6GlcNAc2 (PMID: 18003979). Mutations in MAN1B1 cause autosomal-recessive intellectual disability. This gene has been associated with Rafiq syndrome (PMID: 21763484).

## Lagerung

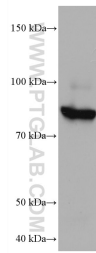
**Lagerungsbedingungen:**  
Bei -20°C lagern. Nach dem Versand ein Jahr lang stabil  
**Lagerungspuffer:**  
PBS mit 0.02% Natriumazid und 50% Glycerin pH 7.3.  
Aliquotieren ist nicht notwendig bei -20°C Lagerung

\*\*\* 20ul-Größen enthalten 0.1% BSA

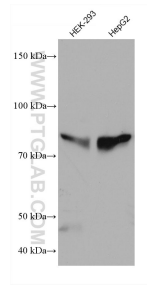
For technical support and original validation data for this product please contact:  
T: 1 (888) 4PTGLAB (1-888-478-4522) (toll free in USA), or 1(312) 455-8498 (outside USA) E: proteintech@ptglab.com W: ptglab.com

This product is exclusively available under Proteintech Group brand and is not available to purchase from any other manufacturer.

## Ausgewählte Validierungsdaten



HeLa cells were subjected to SDS PAGE followed by western blot with 68121-1-Ig (MAN1B1 antibody) at dilution of 1:3000 incubated at room temperature for 1.5 hours.



Various lysates were subjected to SDS PAGE followed by western blot with 68121-1-Ig (MAN1B1 antibody) at dilution of 1:3000 incubated at room temperature for 1.5 hours.