

Nur für Forschungszwecke

# PSMA8 Monoklonaler Antikörper

Katalog-Nr.:68123-1-Ig



## Allgemeine Informationen

<b>Katalog-Nr.:</b> 68123-1-Ig	<b>GenBank-Zugangsnummer:</b> BC042820	<b>Reinigungsmethode:</b> Protein-A-Reinigung
<b>Größe:</b> 150ul , Konzentration: 1000 µg/ml von143471 Nanodrop;	<b>GeneID (NCBI):</b> 143471	<b>CloneNo.:</b> 2G2G3
<b>Wirt:</b> Maus	<b>Vollständiger Name:</b> proteasome (prosome, macropain) subunit, alpha type, 8	<b>Empfohlene Verdünnungen:</b> WB 1:5000-1:50000
<b>Isotyp:</b> IgG2a	<b>Berechnete Masse:</b> 29 kDa	
<b>Immunogen Katalognummer:</b> AG5138	<b>Beobachtete Masse:</b> 28 kDa	

## Anwendungen

<b>Geprüfte Anwendungen:</b> WB, ELISA	<b>Positivkontrollen:</b> WB : HCT 116-Zellen, A549-Zellen, Hausschwein- Lungengewebe, HeLa-Zellen, HuH-7-Zellen, Mauslungengewebe, NCI-H1299-Zellen, Rattenlungengewebe
<b>Getestete Reaktivität:</b> Hausschwein, Human, Kaninchen, Maus, Ratte	

## Hintergrundinformationen

1

## Lagerung

**Lagerungsbedingungen:**  
Bei -20°C lagern.  
**Lagerungspuffer:**  
PBS mit 0.02% Natriumazid und 50% Glycerin pH 7.3.  
Aliquotieren ist nicht notwendig bei -20°C Lagerung

\*\*\* 20ul-Größen enthalten 0.1% BSA

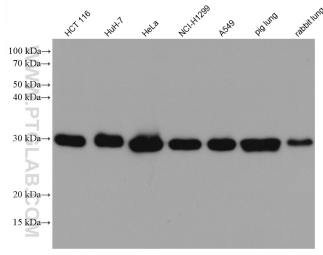
For technical support and original validation data for this product please contact:

T: 1 (888) 4PTGLAB (1-888-478-4522) (toll free  
in USA), or 1(312) 455-8498 (outside USA)

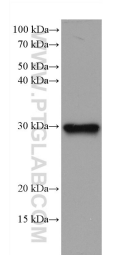
E: proteintech@ptglab.com  
W: ptglab.com

This product is exclusively available under Proteintech Group brand and is not available to purchase from any other manufacturer.

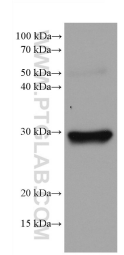
## Ausgewählte Validierungsdaten



Various lysates were subjected to SDS PAGE followed by western blot with 68123-1-Ig (PSMA8 antibody) at dilution of 1:10000 incubated at room temperature for 1.5 hours.



rat lung tissue were subjected to SDS PAGE followed by western blot with 68123-1-Ig (PSMA8 antibody) at dilution of 1:10000 incubated at room temperature for 1.5 hours.



mouse lung tissue were subjected to SDS PAGE followed by western blot with 68123-1-Ig (PSMA8 antibody) at dilution of 1:10000 incubated at room temperature for 1.5 hours.