

Nur für Forschungszwecke

# RYBP Monoklonaler Antikörper

Katalog-Nr.:68130-1-Ig



## Allgemeine Informationen

<b>Katalog-Nr.:</b> 68130-1-Ig	<b>GenBank-Zugangsnummer:</b> BC014959	<b>Reinigungsmethode:</b> Protein-G-Reinigung
<b>Größe:</b> 150ul , Konzentration: 1000 µg/ml von23429 Nanodrop;	<b>GeneID (NCBI):</b> 23429	<b>CloneNo.:</b> 2C6G7
<b>Wirt:</b> Maus	<b>Vollständiger Name:</b> RING1 and YY1 binding protein	<b>Empfohlene Verdünnungen:</b> WB 1:5000-1:50000
<b>Isotyp:</b> IgG1	<b>Berechnete Masse:</b> 228 aa, 25 kDa	
<b>Immunogen Katalognummer:</b> AG31715	<b>Beobachtete Masse:</b> 32 kDa	

## Anwendungen

<b>Geprüfte Anwendungen:</b> WB, ELISA	<b>Positivkontrollen:</b> WB : A549-Zellen, Daudi-Zellen, HEK-293-Zellen, HeLa-Zellen, Jurkat-Zellen, LNCaP-Zellen, RAW 264.7-Zellen, U2OS-Zellen
<b>Getestete Reaktivität:</b> Human, Maus	

## Hintergrundinformationen

Polycomb repressive complexes (PRCs) are important chromatin regulators of embryonic stem (ES) cell function [PMID:22269950]. RYBP binds Polycomb H2A monoubiquitin ligases Ring1A and Ring1B and has been suggested to assist PRC localization to their targets. RYBP, firstly identified as a direct interactor with Ring1A, acts as transcriptional repressor in reporter assays, both in tissue culture cells and in the fly [PMID:16125914]

## Lagerung

**Lagerungsbedingungen:**  
Bei -20°C lagern. Nach dem Versand ein Jahr lang stabil  
**Lagerungspuffer:**  
PBS mit 0.02% Natriumazid und 50% Glycerin pH 7.3.  
Aliquotieren ist nicht notwendig bei -20°C Lagerung

\*\*\* 20ul-Größen enthalten 0.1% BSA

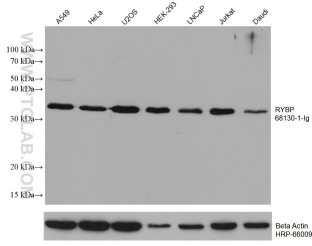
For technical support and original validation data for this product please contact:

T: 1 (888) 4PTGLAB (1-888-478-4522) (toll free in USA), or 1(312) 455-8498 (outside USA)

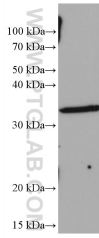
E: proteintech@ptglab.com  
W: ptglab.com

This product is exclusively available under Proteintech Group brand and is not available to purchase from any other manufacturer.

## Ausgewählte Validierungsdaten



Various lysates were subjected to SDS PAGE followed by western blot with 68130-1-Ig (RYBP antibody) at dilution of 1:20000 incubated at room temperature for 1.5 hours. The membrane was stripped and reblotted with HRP-conjugated Beta Actin Monoclonal antibody (HRP-66009) as loading control.



RAW 264.7 cells were subjected to SDS PAGE followed by western blot with 68130-1-Ig (RYBP antibody) at dilution of 1:20000 incubated at room temperature for 1.5 hours.