

Nur für Forschungszwecke

# PLA2G4A Monoklonaler Antikörper

Katalog-Nr.:68133-1-Ig



## Allgemeine Informationen

<b>Katalog-Nr.:</b> 68133-1-Ig	<b>GenBank-Zugangsnummer:</b> BC114340	<b>Reinigungsmethode:</b> Protein-G-Reinigung
<b>Größe:</b> 150ul, Konzentration: 1000 µg/ml von5321 Nanodrop;	<b>GeneID (NCBI):</b> 5321	<b>CloneNo.:</b> 2D10H8
<b>Wirt:</b> Maus	<b>Vollständiger Name:</b> phospholipase A2, group IVA (cytosolic, calcium-dependent)	<b>Empfohlene Verdünnungen:</b> WB 1:5000-1:50000 IHC 1:500-1:2000
<b>Isotyp:</b> IgG1	<b>Berechnete Masse:</b> 749 aa, 85 kDa	
<b>Immunogen Katalognummer:</b> AG32674	<b>Beobachtete Masse:</b> 85-100 kDa	

## Anwendungen

### Geprüfte Anwendungen:

IHC, WB, ELISA

### Getestete Reaktivität:

Human

**Hinweis-IHC: Antigenmaskierung mit TE-Puffer pH 9,0 empfohlen. (\*) Wahlweise kann die Antigenmaskierung auch mit Citratpuffer pH 6,0 erfolgen.**

### Positivkontrollen:

WB : HEK-293-Zellen, A549-Zellen, HeLa-Zellen, K-562-Zellen, NIH/3T3-Zellen

IHC : humanes Lungenkarzinomgewebe,

## Hintergrundinformationen

### Lagerung

#### Lagerungsbedingungen:

Bei -20°C lagern. Nach dem Versand ein Jahr lang stabil

#### Lagerungspuffer:

PBS mit 0.02% Natriumazid und 50% Glycerin pH 7.3.

Aliquotieren ist nicht notwendig bei -20°C Lagerung

\*\*\* 20ul-Größen enthalten 0.1% BSA

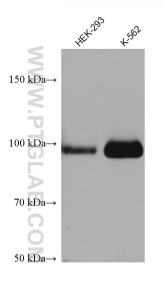
For technical support and original validation data for this product please contact:

T: 1 (888) 4PTGLAB (1-888-478-4522) (toll free in USA), or 1(312) 455-8498 (outside USA)

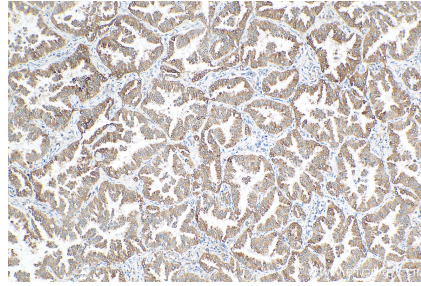
E: proteintech@ptglab.com  
W: ptglab.com

This product is exclusively available under Proteintech Group brand and is not available to purchase from any other manufacturer.

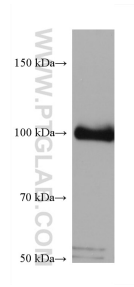
## Ausgewählte Validierungsdaten



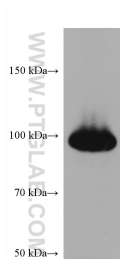
Various lysates were subjected to SDS PAGE followed by western blot with 68133-1-Ig (PLA2G4A antibody) at dilution of 1:10000 incubated at room temperature for 1.5 hours.



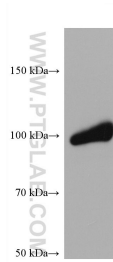
Immunohistochemical analysis of paraffin-embedded human lung cancer tissue slide using 68133-1-Ig (PLA2G4A antibody) at dilution of 1:1000 (under 10x lens). Heat mediated antigen retrieval with Tris-EDTA buffer (pH 9.0).



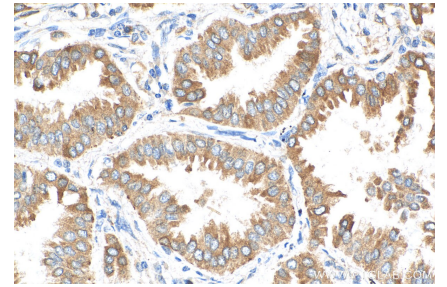
A549 cells were subjected to SDS PAGE followed by western blot with 68133-1-Ig (PLA2G4A antibody) at dilution of 1:10000 incubated at room temperature for 1.5 hours.



HeLa cells were subjected to SDS PAGE followed by western blot with 68133-1-Ig (PLA2G4A antibody) at dilution of 1:10000 incubated at room temperature for 1.5 hours.



NIH/3T3 cells were subjected to SDS PAGE followed by western blot with 68133-1-Ig (PLA2G4A antibody) at dilution of 1:10000 incubated at room temperature for 1.5 hours.



Immunohistochemical analysis of paraffin-embedded human lung cancer tissue slide using 68133-1-Ig (PLA2G4A antibody) at dilution of 1:1000 (under 40x lens). Heat mediated antigen retrieval with Tris-EDTA buffer (pH 9.0).