

Nur für Forschungszwecke

MYO1E Monoklonaler Antikörper

Katalog-Nr.:68152-1-Ig



Allgemeine Informationen

Katalog-Nr.: 68152-1-Ig	GenBank-Zugangsnummer: BC098392	Reinigungsmethode: Protein-G-Reinigung
Größe: 150ul , Konzentration: 1000 µg/ml von4643 Nanodrop;	GeneID (NCBI): 4643	CloneNo.: 2A12F5
Wirt: Maus	Vollständiger Name: myosin IE	Empfohlene Verdünnungen: WB 1:5000-1:50000
Isotyp: IgG1	Berechnete Masse: 1108 aa, 127 kDa	
Immunogen Katalognummer: AG12244	Beobachtete Masse: 120-150 kDa	

Anwendungen

Geprüfte Anwendungen:
WB, ELISA

Getestete Reaktivität:
Human, Maus, Ratte

Positivkontrollen:

WB : A549-Zellen, HEK-293-Zellen, Jurkat-Zellen, K-562-Zellen, LNCaP-Zellen, NIH/3T3-Zellen

Hintergrundinformationen

MYO1E, also named as Myosin-Ie and MYO1C (distinct from the MYO1C gene located on chromosome 17), encodes a member of the nonmuscle class I myosins which are a subgroup of the unconventional myosin protein family. The unconventional myosin proteins function as actin-based molecular motors. This protein localizes to the cytoplasm and may be involved in intracellular movement and membrane trafficking. Mutations in this gene are the cause of focal segmental glomerulosclerosis-6.

Lagerung

Lagerungsbedingungen:
Bei -20°C lagern. Nach dem Versand ein Jahr lang stabil

Lagerungspuffer:
PBS mit 0.02% Natriumazid und 50% Glycerin pH 7.3.

Aliquotieren ist nicht notwendig bei -20°C Lagerung

*** 20ul-Größen enthalten 0.1% BSA

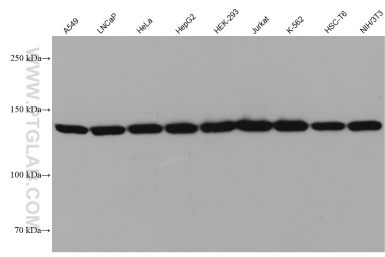
For technical support and original validation data for this product please contact:

T: 1 (888) 4PTGLAB (1-888-478-4522) (toll free in USA), or 1(312) 455-8498 (outside USA)

E: proteintech@ptglab.com
W: ptglab.com

This product is exclusively available under Proteintech Group brand and is not available to purchase from any other manufacturer.

Ausgewählte Validierungsdaten



Various lysates were subjected to SDS PAGE followed by western blot with 68152-1-Ig (MYO1E antibody) at dilution of 1:10000 incubated at room temperature for 1.5 hours.