

Nur für Forschungszwecke

STIP1 Monoklonaler Antikörper

Katalog-Nr.:68155-1-Ig



Allgemeine Informationen

Katalog-Nr.: 68155-1-Ig	GenBank-Zugangsnummer: BC002987	Reinigungsmethode: Protein-G-Reinigung
Größe: 150ul , Konzentration: 1000 µg/ml von10963 Nanodrop;	GeneID (NCBI): 10963	CloneNo.: 1B5H2
Wirt: Maus	Vollständiger Name: stress-induced-phosphoprotein 1	Empfohlene Verdünnungen: WB 1:5000-1:50000 IP 0.5-4.0 ug für IP und 1:500-1:2000 für WB
Isotyp: IgG1	Berechnete Masse: 63 kDa	IHC 1:500-1:2000
Immunogen Katalognummer: AG7851	Beobachtete Masse: 61 kDa	

Anwendungen

Geprüfte Anwendungen:

IHC, IP, WB, ELISA

Getestete Reaktivität:

Human, Maus, Ratte

Hinweis-IHC: Antigenmaskierung mit TE-Puffer pH 9,0 empfohlen. (*) Wahlweise kann die Antigenmaskierung auch mit Citratpuffer pH 6,0 erfolgen.

Positivkontrollen:

WB: A549-Zellen, HeLa-Zellen, HepG2-Zellen, Jurkat-Zellen, K-562-Zellen, LNCaP-Zellen, NIH/3T3-Zellen

IP: HeLa-Zellen, Jurkat-Zellen

IHC: Mauslebergewebe,

Hintergrundinformationen

STIP1, also named as Hop and NY-REN-11. Its expression is low in the hypothalamus. STIP1 has some isoforms with MW 62 kDa, 68 kDa and 59 kDa. Acts as a co-chaperone for HSP90AA1. Mediates the association of the molecular chaperones HSPA8/HSC70 and HSP90. Probably forms a complex composed of chaperones HSP90 and HSP70, co-chaperones STIP1/HOP, CDC37, PPP5C, PTGES3/p23, TSC1 and client protein TSC2. STIP1 interacts with PACRG, EEF1AKMT3, FLCN, FNIP1 and FNIP2 (PMID:24880080).

Lagerung

Lagerungsbedingungen:

Bei -20°C lagern. Nach dem Versand ein Jahr lang stabil

Lagerungspuffer:

PBS mit 0.02% Natriumazid und 50% Glycerin pH 7.3.

Aliquotieren ist nicht notwendig bei -20°C Lagerung

***** 20ul-Größen enthalten 0.1% BSA**

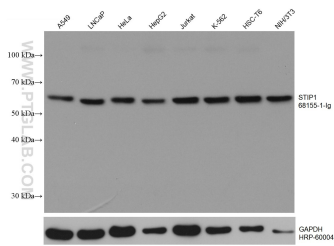
For technical support and original validation data for this product please contact:

T: 1 (888) 4PTGLAB (1-888-478-4522) (toll free in USA), or 1(312) 455-8498 (outside USA)

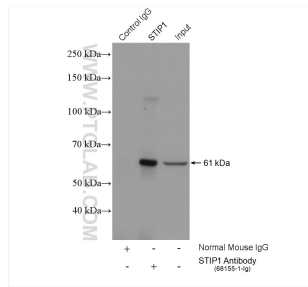
E: proteintech@ptglab.com
W: ptglab.com

This product is exclusively available under Proteintech Group brand and is not available to purchase from any other manufacturer.

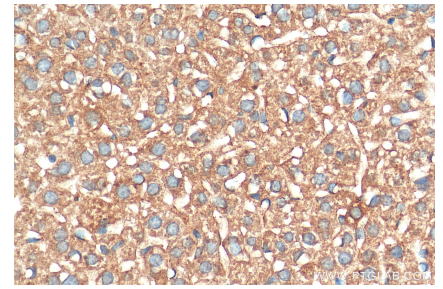
Ausgewählte Validierungsdaten



Various lysates were subjected to SDS PAGE followed by western blot with 68155-1-Ig (STIP1 antibody) at dilution of 1:10000 incubated at room temperature for 1.5 hours. The membrane was stripped and reblotted with HRP-conjugated GAPDH Monoclonal antibody (HRP-60004) as loading control.



IP result of anti-STIP1 (IP:68155-1-Ig, 5ug; Detection:68155-1-Ig 1:1000) with HeLa cells lysate 1880 ug.



Immunohistochemical analysis of paraffin-embedded mouse liver tissue slide using 68155-1-Ig (STIP1 antibody) at dilution of 1:1000 (under 40x lens). Heat mediated antigen retrieval with Tris-EDTA buffer (pH 9.0).