

Nur für Forschungszwecke

# LANCL1 Monoklonaler Antikörper

Katalog-Nr.:68160-1-Ig



## Allgemeine Informationen

<b>Katalog-Nr.:</b> 68160-1-Ig	<b>GenBank-Zugangsnummer:</b> BC028685	<b>Reinigungsmethode:</b> Protein-G-Reinigung
<b>Größe:</b> 150ul , Konzentration: 1000 µg/ml von10314 Nanodrop;	<b>GeneID (NCBI):</b> 10314	<b>CloneNo.:</b> 2H6E8
<b>Wirt:</b> Maus	<b>Vollständiger Name:</b> LanC lantibiotic synthetase component C-like 1 (bacterial)	<b>Empfohlene Verdünnungen:</b> WB 1:5000-1:50000
<b>Isotyp:</b> IgG1	<b>Berechnete Masse:</b> 399 aa, 45 kDa	
<b>Immunogen Katalognummer:</b> AG32665	<b>Beobachtete Masse:</b> 40 kDa	

## Anwendungen

<b>Geprüfte Anwendungen:</b> WB, ELISA	<b>Positivkontrollen:</b>
<b>Getestete Reaktivität:</b> Hausschwein, Human, Maus, Ratte	<b>WB :</b> HeLa-Zellen, Hausschwein-Hirngewebe, HepG2-Zellen, K-562-Zellen, Kaninchenhirngewebe, Maushirngewebe, NIH/3T3-Zellen, Rattenhirngewebe

## Hintergrundinformationen

LanCL1 ( also known as P40 or GRP69A), is homologous to bacterial lanthionine synthetase C (LanC) family, which is involved in the biosynthesis of antimicrobial peptides (lantibiotics). LanCL1 was identified as a reduced glutathione (GSH)-binding protein and primarily expressed in neural tissues and testis.

## Lagerung

**Lagerungsbedingungen:**  
Bei -20°C lagern. Nach dem Versand ein Jahr lang stabil  
**Lagerungspuffer:**  
PBS mit 0.02% Natriumazid und 50% Glycerin pH 7.3.  
**Aliquotieren ist nicht notwendig bei -20°C Lagerung**

**\*\*\* 20ul-Größen enthalten 0.1% BSA**

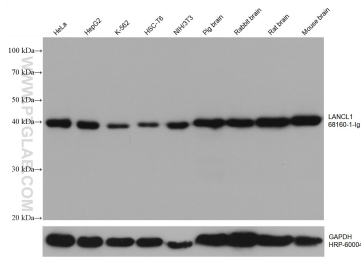
For technical support and original validation data for this product please contact:

T: 1 (888) 4PTGLAB (1-888-478-4522) (toll free in USA), or 1(312) 455-8498 (outside USA)

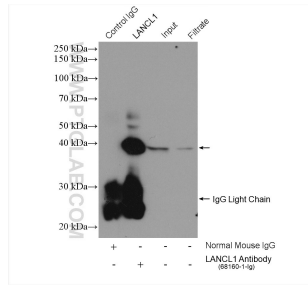
E: proteintech@ptglab.com  
W: ptglab.com

**This product is exclusively available under Proteintech Group brand and is not available to purchase from any other manufacturer.**

## Ausgewählte Validierungsdaten



Various lysates were subjected to SDS PAGE followed by western blot with 68160-1-Ig (LANCL1 antibody) at dilution of 1:10000 incubated at room temperature for 1.5 hours. The membrane was stripped and reblotted with HRP-conjugated GAPDH Monoclonal antibody (HRP-60004) as loading control.



IP result of anti-LANCL1(IP:68160-1-Ig, 5ug; Detection:68160-1-Ig 1:2000) with mouse brain tissue lysate 1600 ug.