

Nur für Forschungszwecke

# TCEB1 Monoklonaler Antikörper

Katalog-Nr.:68164-1-Ig



## Allgemeine Informationen

<b>Katalog-Nr.:</b> 68164-1-Ig	<b>GenBank-Zugangsnummer:</b> BC013809	<b>Reinigungsmethode:</b> Protein-A-Reinigung
<b>Größe:</b> 150ul , Konzentration: 1000 µg/ml von6921 Nanodrop;	<b>GeneID (NCBI):</b> 2D6D8	<b>CloneNo.:</b> 2D6D8
<b>Wirt:</b> Maus	<b>Vollständiger Name:</b> transcription elongation factor B (SIII),WB 1:5000-1:50000 polypeptide 1 (15kDa, elongin C)	<b>Empfohlene Verdünnungen:</b>
<b>Isotyp:</b> IgG1	<b>Berechnete Masse:</b> 112 aa, 12 kDa	
<b>Immunogen Katalognummer:</b> AG22601	<b>Beobachtete Masse:</b> 12 kDa	

## Anwendungen

**Geprüfte Anwendungen:**  
WB, ELISA  
**Getestete Reaktivität:**  
Human, Maus, Ratte

**Positivkontrollen:**  
WB : LNCaP-Zellen, Jurkat-Zellen, K-562-Zellen,  
Maushirngewebe, NIH/3T3-Zellen, Rattenhirngewebe

## Hintergrundinformationen

TCEB1, also named as RNA polymerase II transcription factor SIII subunit C, belongs to the SKP1 family. It mediates the ubiquitination of ECS-E3 ubiquitin-protein ligase complexes. TCEB1 is overexpressed in prostate cancer cell line PC-3 and breast cancer cell line SK-BR-3. TCEB1 also promotes invasion of prostate cancer cells (PMID:18844214).

## Lagerung

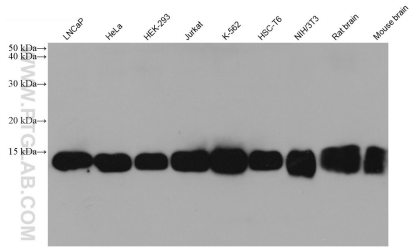
**Lagerungsbedingungen:**  
Bei -20°C lagern. Nach dem Versand ein Jahr lang stabil  
**Lagerungspuffer:**  
PBS mit 0.02% Natriumazid und 50% Glycerin pH 7.3.  
**Aliquotieren ist nicht notwendig bei -20°C Lagerung**

**\*\*\* 20ul-Größen enthalten 0.1% BSA**

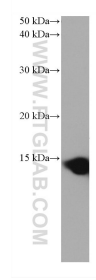
For technical support and original validation data for this product please contact:  
T: 1 (888) 4PTGLAB (1-888-478-4522) (toll free in USA), or 1(312) 455-8498 (outside USA)  
E: proteintech@ptglab.com  
W: ptglab.com

**This product is exclusively available under Proteintech Group brand and is not available to purchase from any other manufacturer.**

## Ausgewählte Validierungsdaten



Various lysates were subjected to SDS PAGE followed by western blot with 68164-1-Ig (TCEB1 antibody) at dilution of 1:10000 incubated at room temperature for 1.5 hours.



LNCaP cells were subjected to SDS PAGE followed by western blot with 68164-1-Ig (TCEB1 antibody) at dilution of 1:10000 incubated at room temperature for 1.5 hours.