

Nur für Forschungszwecke

NIT2 Monoklonaler Antikörper

Katalog-Nr.:68169-1-Ig



Allgemeine Informationen

Katalog-Nr.: 68169-1-Ig	GenBank-Zugangsnummer: BC020620	Reinigungsmethode: Protein-A-Reinigung
Größe: 150ul , Konzentration: 1000 µg/ml von56954 Nanodrop;	GeneID (NCBI): 56954	CloneNo.: 1E5B1
Wirt: Maus	Vollständiger Name: nitrilase family, member 2	Empfohlene Verdünnungen: WB 1:5000-1:50000 IHC 1:200-1:800 IF 1:200-1:800
Isotyp: IgG2b	Berechnete Masse: 276 aa, 31 kDa	
Immunogen Katalognummer: AG9889	Beobachtete Masse: 31 kDa	

Anwendungen

Geprüfte Anwendungen:

IF, IHC, WB, ELISA

Getestete Reaktivität:

Hausschwein, Human, Maus, Ratte

Hinweis-IHC: Antigendemaskierung mit TE-Puffer pH 9,0 empfohlen. (*) Wahlweise kann die Antigendemaskierung auch mit Citratpuffer pH 6,0 erfolgen.

Positivkontrollen:

WB : HEK-293-Zellen, Hausschwein-Lebergewebe, HeLa-Zellen, HepG2-Zellen, Jurkat-Zellen, Mauslebergewebe

IHC : humanes Nierengewebe,

IF : U-251-Zellen,

Hintergrundinformationen

NIT2 belongs to a branch of the nitrilase superfamily of enzymes that cleave carbon-nitrogen bonds. NIT2 functions as an omega-amidase and catalyzes hydrolysis of alpha-ketoglutaramate, forming alpha-ketoglutarate and ammonia. This reaction is also functionally coupled with a subset of transaminases that reaminate the keto acid analogs of some essential amino acids, most particularly methionine and phenylalanine.

Lagerung

Lagerungsbedingungen:

Bei -20°C lagern. Nach dem Versand ein Jahr lang stabil

Lagerungspuffer:

PBS mit 0.02% Natriumazid und 50% Glycerin pH 7.3.

Aliquotieren ist nicht notwendig bei -20°C Lagerung

*** 20ul-Größen enthalten 0.1% BSA

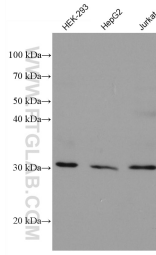
For technical support and original validation data for this product please contact:

T: 1 (888) 4PTGLAB (1-888-478-4522) (toll free in USA), or 1(312) 455-8498 (outside USA)

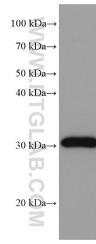
E: proteintech@ptglab.com
W: ptglab.com

This product is exclusively available under Proteintech Group brand and is not available to purchase from any other manufacturer.

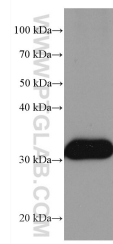
Ausgewählte Validierungsdaten



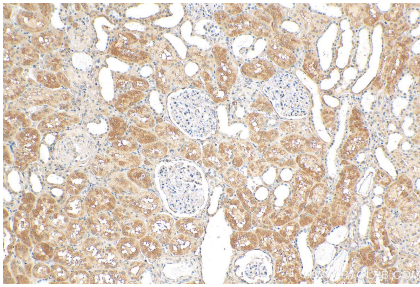
Various lysates were subjected to SDS PAGE followed by western blot with 68169-1-Ig (NIT2 antibody) at dilution of 1:20000 incubated at room temperature for 1.5 hours.



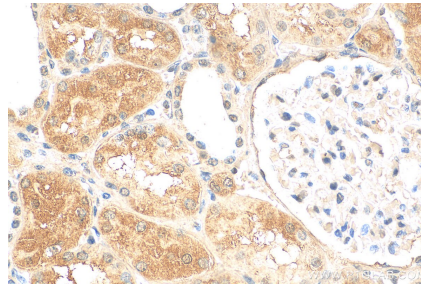
pig liver tissue were subjected to SDS PAGE followed by western blot with 68169-1-Ig (NIT2 antibody) at dilution of 1:20000 incubated at room temperature for 1.5 hours.



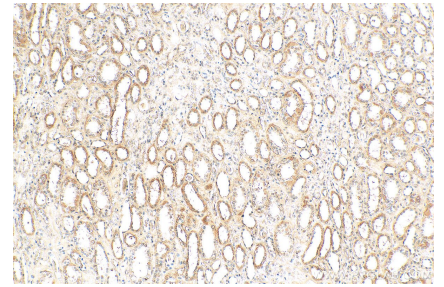
rat liver tissue were subjected to SDS PAGE followed by western blot with 68169-1-Ig (NIT2 antibody) at dilution of 1:20000 incubated at room temperature for 1.5 hours.



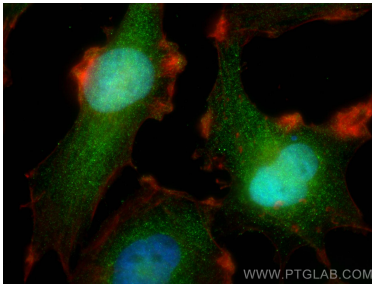
Immunohistochemical analysis of paraffin-embedded human kidney tissue slide using 68169-1-Ig (NIT2 antibody) at dilution of 1:400 (under 10x lens). Heat mediated antigen retrieval with Tris-EDTA buffer (pH 9.0).



Immunohistochemical analysis of paraffin-embedded human kidney tissue slide using 68169-1-Ig (NIT2 antibody) at dilution of 1:400 (under 40x lens). Heat mediated antigen retrieval with Tris-EDTA buffer (pH 9.0).



Immunohistochemical analysis of paraffin-embedded human kidney tissue slide using 68169-1-Ig (NIT2 antibody) at dilution of 1:400 (under 10x lens). Heat mediated antigen retrieval with Tris-EDTA buffer (pH 9.0).



Immunofluorescent analysis of (4% PFA) fixed U-251 cells using NIT2 antibody (68169-1-Ig, Clone: 1E5B1) at dilution of 1:400 and CoraLite®488-Conjugated AffiniPure Goat Anti-Mouse IgG(H+L), CL594-Phalloidin (red).