

Nur für Forschungszwecke

GPD2 Monoklonaler Antikörper

Katalog-Nr.: 68174-1-Ig



Allgemeine Informationen

Katalog-Nr.: 68174-1-Ig	GenBank-Zugangsnummer: BC019874	Reinigungsmethode: Protein-G-Reinigung
Größe: 150ul, Konzentration: 500 µg/ml von Nanodrop;	GeneID (NCBI): 2820	CloneNo.: 1C12E2
Wirt: Maus	Vollständiger Name: glycerol-3-phosphate dehydrogenase 2 (mitochondrial)	Empfohlene Verdünnungen: WB 1:5000-1:50000
Isotyp: IgG1	Berechnete Masse: 41 kDa, 81 kDa	
Immunogen Katalognummer: AG11212		

Anwendungen

Geprüfte Anwendungen:
WB, ELISA

Getestete Reaktivität:
Human, Maus, Ratte

Positivkontrollen:
WB: LNCaP-Zellen, 4T1-Zellen, HeLa-Zellen, NIH/3T3-Zellen

Hintergrundinformationen

GPD2 (Glycerol-3-phosphate dehydrogenase, mitochondrial) belongs to the FAD-dependent glycerol-3-phosphate dehydrogenase family. It is phosphorylated only in capacitated hamster spermatozoa and is noncanonically localized in the acrosome and principal piece in human, mouse, rat, and hamster spermatozoa, though in somatic cells it is localized in the mitochondria. This noncanonical localization may imply a role of GPD2 in acrosome reaction and hyperactivation (PMID:19333995).

Lagerung

Lagerungsbedingungen:
Bei -20°C lagern. Nach dem Versand ein Jahr lang stabil

Lagerungspuffer:
PBS mit 0.02% Natriumazid und 50% Glycerin pH 7.3.

Aliquotieren ist nicht notwendig bei -20°C Lagerung

*** 20ul-Größen enthalten 0.1% BSA

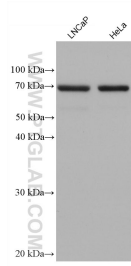
For technical support and original validation data for this product please contact:

T: 1 (888) 4PTGLAB (1-888-478-4522) (toll free
in USA), or 1(312) 455-8498 (outside USA)

E: proteintech@ptglab.com
W: ptglab.com

This product is exclusively available under Proteintech Group brand and is not available to purchase from any other manufacturer.

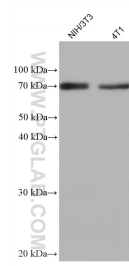
Ausgewählte Validierungsdaten



Various lysates were subjected to SDS PAGE followed by western blot with 68174-1-Ig (GPD2 antibody) at dilution of 1:10000 incubated at room temperature for 1.5 hours.



HSC-T6 cells were subjected to SDS PAGE followed by western blot with 68174-1-Ig (GPD2 antibody) at dilution of 1:10000 incubated at room temperature for 1.5 hours.



Various lysates were subjected to SDS PAGE followed by western blot with 68174-1-Ig (GPD2 antibody) at dilution of 1:10000 incubated at room temperature for 1.5 hours.