

Nur für Forschungszwecke

ENOPH1 Monoklonaler Antikörper

Katalog-Nr.:68179-1-Ig



Allgemeine Informationen

| | | |
|--|---|--|
| Katalog-Nr.: 68179-1-Ig | GenBank-Zugangsnummer: BC065815 | Reinigungsmethode: Protein-G-Reinigung |
| Größe: 150ul , Konzentration: 1000 µg/ml von58478 Nanodrop; | GeneID (NCBI): 58478 | CloneNo.: 1F1E11 |
| Wirt: Maus | Vollständiger Name: enolase-phosphatase 1 | Empfohlene Verdünnungen: WB 1:5000-1:50000 |
| Isotyp: IgG1 | Berechnete Masse: 261 aa, 29 kDa | |
| Immunogen Katalognummer: AG12553 | Beobachtete Masse: 29-35 kDa | |

Anwendungen

| | |
|---|---|
| Geprüfte Anwendungen: WB, ELISA | Positivkontrollen: WB : LNCaP-Zellen, Hausschwein-Hirngewebe, HeLa-Zellen, HepG2-Zellen, Jurkat-Zellen, Kaninchenhirngewebe, Maushirngewebe, Rattenhirngewebe |
| Getestete Reaktivität: Hausschwein, Human, Kaninchen, Maus, Ratte | |

Hintergrundinformationen

ENOPH1, also named as MASA and MSTP145, belongs to the HAD-like hydrolase superfamily and MasA/MtnC family. ENOPH1 is a newly identified enzyme involved in L-methionine biosynthesis, which is associated with anxiety and depression. Studies have shown that ENOPH1 plays a crucial role in promoting the proliferation and migration of glioma cells (PMID: 32654229). ENOPH1 has 2 isoforms with the molecular mass of 13 and 29 kDa.

Lagerung

Lagerungsbedingungen:
Bei -20°C lagern. Nach dem Versand ein Jahr lang stabil
Lagerungspuffer:
PBS mit 0.02% Natriumazid und 50% Glycerin pH 7.3.
Aliquotieren ist nicht notwendig bei -20°C Lagerung

*** 20ul-Größen enthalten 0.1% BSA

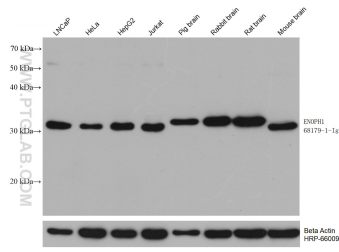
For technical support and original validation data for this product please contact:

T: 1 (888) 4PTGLAB (1-888-478-4522) (toll free in USA), or 1(312) 455-8498 (outside USA)

E: proteintech@ptglab.com
W: ptglab.com

This product is exclusively available under Proteintech Group brand and is not available to purchase from any other manufacturer.

Ausgewählte Validierungsdaten



Various lysates were subjected to SDS PAGE followed by western blot with 68179-1-Ig (ENOPH1 antibody) at dilution of 1:20000 incubated at room temperature for 1.5 hours. The membrane was stripped and reblotted with HRP-conjugated Beta Actin Monoclonal antibody (HRP-66009) as loading control.