

Nur für Forschungszwecke

COMT Monoklonaler Antikörper

Katalog-Nr.: 68181-1-Ig



Allgemeine Informationen

Katalog-Nr.: 68181-1-Ig	GenBank-Zugangsnummer: BC000419	Reinigungsmethode: Protein-G-Reinigung
Größe: 150ul, Konzentration: 1000 µg/ml von1312 Nanodrop;	GeneID (NCBI): 1312	CloneNo.: 1A1A4
Wirt: Maus	Vollständiger Name: catechol-O-methyltransferase	Empfohlene Verdünnungen: WB 1:5000-1:50000
Isotyp: IgG1	Berechnete Masse: 30 kDa	
Immunogen Katalognummer: AG6502	Beobachtete Masse: 28-30 kDa	

Anwendungen

Geprüfte Anwendungen:

FC, WB, ELISA

Getestete Reaktivität:

Hausschwein, Human, Maus, Ratte

Positivkontrollen:

WB : HeLa-Zellen, Hausschwein-Nebennierengewebe, HEK-293-Zellen, HepG2-Zellen, humanes Hodengewebe, K-562-Zellen, Maushodengewebe, Rattenhodengewebe

Hintergrundinformationen

Catechol O-methyltransferase (COMT) is an important enzyme that catalyzes O-methylation and inactivation of metabolically active catechol-containing bioactive molecules and drugs. The mammalian COMT enzyme exists in soluble form (24-26 kDa) and membrane-bound form (28-30 kDa), which are encoded by a single gene utilizing different promoters.

Lagerung

Lagerungsbedingungen:

Bei -20°C lagern. Nach dem Versand ein Jahr lang stabil

Lagerungspuffer:

PBS mit 0.02% Natriumazid und 50% Glycerin pH 7.3.

Aliquotieren ist nicht notwendig bei -20°C Lagerung

***** 20ul-Größen enthalten 0.1% BSA**

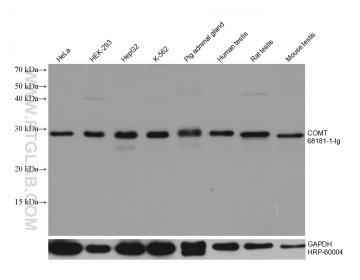
For technical support and original validation data for this product please contact:

T: 1 (888) 4PTGLAB (1-888-478-4522) (toll free in USA), or 1(312) 455-8498 (outside USA)

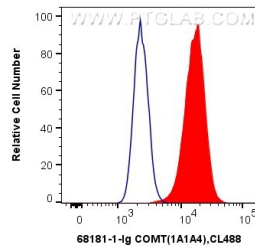
E: proteintech@ptglab.com
W: ptglab.com

This product is exclusively available under Proteintech Group brand and is not available to purchase from any other manufacturer.

Ausgewählte Validierungsdaten



Various lysates were subjected to SDS PAGE followed by western blot with 68181-1-Ig (COMT antibody) at dilution of 1:10000 and incubated at room temperature for 1.5 hours. The membrane was stripped and reblotted with HRP-conjugated GAPDH Monoclonal antibody (HRP-60004) as loading control.



1×10^6 HepG2 cells were intracellularly stained with 0.4 μ g Anti-Human COMT (68181-1-Ig, Clone:1A1A4) and CoraLite@488-Conjugated AffiniPure Goat Anti-Mouse IgG(H+L) at dilution 1:1000 (red), or 0.4 μ g Control Antibody. Cells were fixed with 4% PFA and permeabilized with Flow Cytometry Perm Buffer (PF00011-C).