

Nur für Forschungszwecke

# NSFL1C Monoklonaler Antikörper

Katalog-Nr.:68182-1-Ig



## Allgemeine Informationen

<b>Katalog-Nr.:</b> 68182-1-Ig	<b>GenBank-Zugangsnummer:</b> BC002801	<b>Reinigungsmethode:</b> Protein-G-Reinigung
<b>Größe:</b> 150ul, Konzentration: 1000 µg/ml von55968 Nanodrop;	<b>GeneID (NCBI):</b> NSFL1 (p97) cofactor (p47)	<b>CloneNo.:</b> 1F12E12
<b>Wirt:</b> Maus	<b>Vollständiger Name:</b> NSFL1 (p97) cofactor (p47)	<b>Empfohlene Verdünnungen:</b> WB 1:5000-1:50000 IHC 1:500-1:2000 IF 1:400-1:1600
<b>Isotyp:</b> IgG1	<b>Berechnete Masse:</b> 41 kDa	
<b>Immunogen Katalognummer:</b> AG8040	<b>Beobachtete Masse:</b> 41 kDa	

## Anwendungen

### Geprüfte Anwendungen:

IF, IHC, WB, ELISA

### Getestete Reaktivität:

Hausschwein, Human, Maus, Ratte

**Hinweis-IHC: Antigenmaskierung mit TE-Puffer pH 9,0 empfohlen. (\*) Wahlweise kann die Antigenmaskierung auch mit Citratpuffer pH 6,0 erfolgen.**

### Positivkontrollen:

WB: Rattenhirngewebe, A431-Zellen, A549-Zellen, Hausschwein-Hirngewebe, HeLa-Zellen, Jurkat-Zellen, LNCaP-Zellen, Maushirngewebe, U2OS-Zellen

IHC: humanes Lungenkarzinomgewebe,

IF: A431-Zellen,

## Hintergrundinformationen

### Lagerung

#### Lagerungsbedingungen:

Bei -20°C lagern. Nach dem Versand ein Jahr lang stabil

#### Lagerungspuffer:

PBS mit 0.02% Natriumazid und 50% Glycerin pH 7.3.

Aliquotieren ist nicht notwendig bei -20°C Lagerung

\*\*\* 20ul-Größen enthalten 0.1% BSA

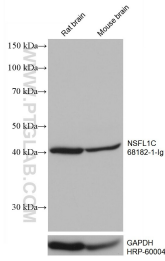
For technical support and original validation data for this product please contact:

T: 1 (888) 4PTGLAB (1-888-478-4522) (toll free in USA), or 1(312) 455-8498 (outside USA)

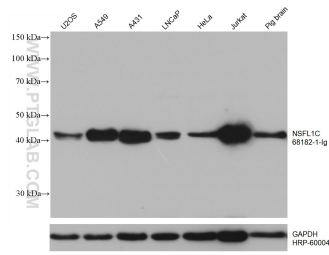
E: proteintech@ptglab.com  
W: ptglab.com

This product is exclusively available under Proteintech Group brand and is not available to purchase from any other manufacturer.

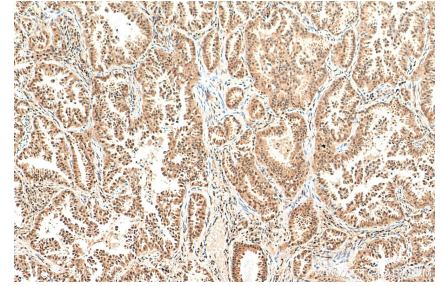
## Ausgewählte Validierungsdaten



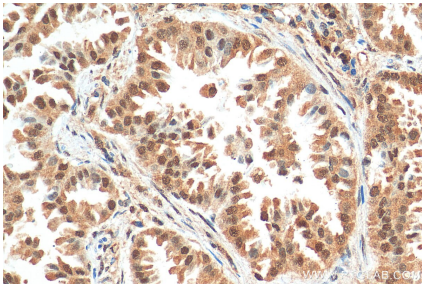
Various lysates were subjected to SDS PAGE followed by western blot with 68182-1-Ig (NSFL1C antibody) at dilution of 1:10000 incubated at room temperature for 1.5 hours. The membrane was stripped and reblotted with HRP-conjugated GAPDH Monoclonal antibody (HRP-60004) as loading control.



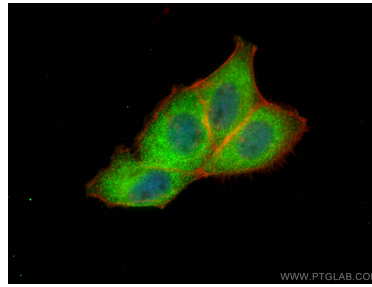
Various lysates were subjected to SDS PAGE followed by western blot with 68182-1-Ig (NSFL1C antibody) at dilution of 1:10000 incubated at room temperature for 1.5 hours. The membrane was stripped and reblotted with HRP-conjugated GAPDH Monoclonal antibody (HRP-60004) as loading control.



Immunohistochemical analysis of paraffin-embedded human lung cancer tissue slide using 68182-1-Ig (NSFL1C antibody) at dilution of 1:1000 (under 10x lens). Heat mediated antigen retrieval with Tris-EDTA buffer (pH 9.0).



Immunohistochemical analysis of paraffin-embedded human lung cancer tissue slide using 68182-1-Ig (NSFL1C antibody) at dilution of 1:1000 (under 40x lens). Heat mediated antigen retrieval with Tris-EDTA buffer (pH 9.0).



Immunofluorescent analysis of (4% PFA) fixed A431 cells using NSFL1C antibody (68182-1-Ig, Clone: 1F12E12) at dilution of 1:800 and Coralite® 488-Conjugated AffiniPure Goat Anti-Mouse IgG(H+L), CL594-Phalloidin (red).