

Nur für Forschungszwecke

PSMD7 Monoklonaler Antikörper

Katalog-Nr.: 68188-1-Ig



Allgemeine Informationen

Katalog-Nr.: 68188-1-Ig	GenBank-Zugangsnummer: BC012606	Reinigungsmethode: Protein-G-Reinigung
Größe: 150ul, Konzentration: 1000 µg/ml von 5713 Nanodrop;	GeneID (NCBI): 5713	CloneNo.: 3E10E7
Wirt: Maus	Vollständiger Name: proteasome (prosome, macropain) 26S subunit, non-ATPase, 7	Empfohlene Verdünnungen: WB 1:5000-1:50000
Isotyp: IgG1	Berechnete Masse: 324 aa, 37 kDa	
Immunogen Katalognummer: AG9305	Beobachtete Masse: 37 kDa	

Anwendungen

Geprüfte Anwendungen: WB, ELISA	Positivkontrollen: WB: HCT 116-Zellen, HeLa-Zellen, HepG2-Zellen, Jurkat-Zellen, K-562-Zellen, THP-1-Zellen
Getestete Reaktivität: Human	

Hintergrundinformationen

Proteasome 26S subunit, non-ATPase 7 (PSMD7), an ATP-independent component of the 19S regulatory subunit, is a member of the JAMM/MPN domain-associated metallopeptidase (JAMM) DUB family. PSMD7, as a core component of the 26S proteasome, is critical for the degradation of ubiquitinated proteins in the proteasome. PSMD7 arrests cell cycle in the G2/M phase during HIV infection. The molecular weight of PSMD7 is 37 kDa. (PMID: 34512150, 34234864)

Lagerung

Lagerungsbedingungen:
Bei -20°C lagern. Nach dem Versand ein Jahr lang stabil
Lagerungspuffer:
PBS mit 0.02% Natriumazid und 50% Glycerin pH 7.3.
Aliquotieren ist nicht notwendig bei -20°C Lagerung

*** 20ul-Größen enthalten 0.1% BSA

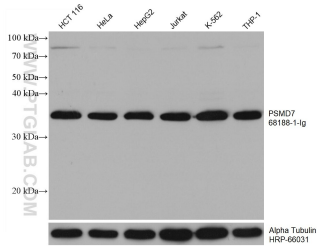
For technical support and original validation data for this product please contact:

T: 1 (888) 4PTGLAB (1-888-478-4522) (toll free in USA), or 1(312) 455-8498 (outside USA)

E: proteintech@ptglab.com
W: ptglab.com

This product is exclusively available under Proteintech Group brand and is not available to purchase from any other manufacturer.

Ausgewählte Validierungsdaten



Various lysates were subjected to SDS PAGE followed by western blot with 68188-1-Ig (PSMD7 antibody) at dilution of 1:20000 incubated at room temperature for 1.5 hours. The membrane was stripped and reblotted with HRP-conjugated Alpha Tubulin Monoclonal antibody (HRP-66031) as loading control.