

Allgemeine Informationen

Katalog-Nr.: 68195-1-Ig	GenBank-Zugangsnummer: BC028599	Reinigungsmethode: Protein-A-Reinigung
Größe: 150ul , Konzentration: 1000 µg/ml von26060 Nanodrop;	GeneID (NCBI): 26060	CloneNo.: 1B7B11
Wirt: Maus	Vollständiger Name: adaptor protein, phosphotyrosine interaction, PH domain and leucine zipper containing 1	Empfohlene Verdünnungen: WB 1:5000-1:50000 IHC 1:200-1:800
Isotyp: IgG2b	Berechnete Masse: 709 aa, 80 kDa	
Immunogen Katalognummer: AG3334	Beobachtete Masse: 80 kDa	

Anwendungen

Geprüfte Anwendungen: IHC, WB, ELISA	Positivkontrollen:
Getestete Reaktivität: Hausschwein, Human, Kaninchen, Maus, Ratte	WB : LNCaP-Zellen, Hausschwein-Herzgewebe, HEK-293-Zellen, HeLa-Zellen, HepG2-Zellen, Jurkat-Zellen, Kaninchenherzgewebe, Rattenherzgewebe
Hinweis-IHC: Antigendemaskierung mit TE-Puffer pH 9,0 empfohlen. (*) Wahlweise kann die Antigendemaskierung auch mit Citratpuffer pH 6,0 erfolgen.	IHC : humanes Kolonkarzinomgewebe,

Hintergrundinformationen

Adaptor protein, phosphotyrosine interaction, PH domain and leucine zipper containing 1 (APPL1), a binding partner of Akt2 and an important regulator of INS signaling, plays a key role in the regulation of INS secretion [PMID:22615370]. APPL1 interacts with adiponectin receptors and mediates the INS-sensitizing effects of adiponectin in muscle and endothelial cells. It also participates in nuclear signaling and transcriptional regulation, mostly by modulating the activity of various nuclear factors [PMID:22685329]. Apart from its role in endocytosis and endosomal transport, APPL1 was reported to undergo nucleocytoplasmic shuttling and participate in transcriptional regulation, e.g. by interactions with histone deacetylases (HDACs) [PMID:19686092].

Lagerung

Lagerungsbedingungen:
Bei -20°C lagern. Nach dem Versand ein Jahr lang stabil
Lagerungspuffer:
PBS mit 0.02% Natriumazid und 50% Glycerin pH 7.3.
Aliquotieren ist nicht notwendig bei -20°C Lagerung

***** 20ul-Größen enthalten 0.1% BSA**

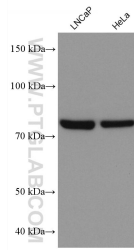
For technical support and original validation data for this product please contact:

T: 1 (888) 4PTGLAB (1-888-478-4522) (toll free in USA), or 1(312) 455-8498 (outside USA)

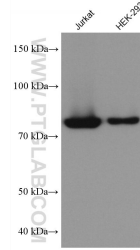
E: proteintech@ptglab.com
W: ptglab.com

This product is exclusively available under Proteintech Group brand and is not available to purchase from any other manufacturer.

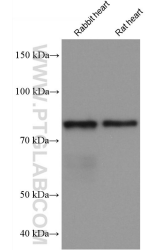
Ausgewählte Validierungsdaten



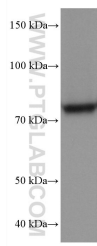
Various lysates were subjected to SDS PAGE followed by western blot with 68195-1-Ig (APPL1 antibody) at dilution of 1:20000 incubated at room temperature for 1.5 hours.



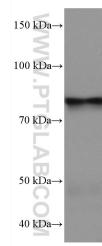
Various lysates were subjected to SDS PAGE followed by western blot with 68195-1-Ig (APPL1 antibody) at dilution of 1:20000 incubated at room temperature for 1.5 hours.



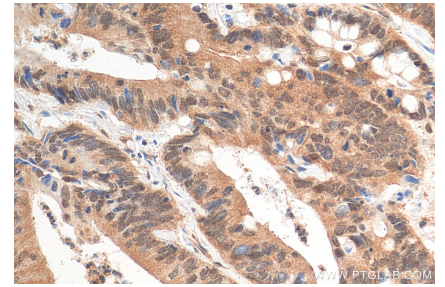
Various lysates were subjected to SDS PAGE followed by western blot with 68195-1-Ig (APPL1 antibody) at dilution of 1:20000 incubated at room temperature for 1.5 hours.



HepG2 cells were subjected to SDS PAGE followed by western blot with 68195-1-Ig (APPL1 antibody) at dilution of 1:20000 incubated at room temperature for 1.5 hours.



pig heart tissue were subjected to SDS PAGE followed by western blot with 68195-1-Ig (APPL1 antibody) at dilution of 1:20000 incubated at room temperature for 1.5 hours.



Immunohistochemical analysis of paraffin-embedded human colon cancer tissue slide using 68195-1-Ig (APPL1 antibody) at dilution of 1:400 (under 40x lens). Heat mediated antigen retrieval with Tris-EDTA buffer (pH 9.0).