

Nur für Forschungszwecke

CAP1 Monoklonaler Antikörper

Katalog-Nr.:68207-1-Ig



Allgemeine Informationen

Katalog-Nr.: 68207-1-Ig	GenBank-Zugangsnummer: BC013963	Reinigungsmethode: Protein-G-Reinigung
Größe: 150ul , Konzentration: 1000 µg/ml von10487 Nanodrop;	GeneID (NCBI): von10487	CloneNo.: 2H3A10
Wirt: Maus	Vollständiger Name: CAP, adenylate cyclase-associated protein 1 (yeast)	Empfohlene Verdünnungen: WB 1:5000-1:50000 IF 1:400-1:1600
Isotyp: IgG1	Berechnete Masse: 475 aa, 52 kDa	
Immunogen Katalognummer: AG8876	Beobachtete Masse: 52 kDa	

Anwendungen

Geprüfte Anwendungen: IF, WB, ELISA	Positivkontrollen:
Getestete Reaktivität: Hausschwein, Human, Kaninchen, Maus, Ratte	WB : Maushodengewebe, Hausschwein-Lungengewebe, humanes Plazenta-Gewebe, Mauslungengewebe, Rattenlungengewebe
	IF : HepG2-Zellen, HeLa-Zellen

Hintergrundinformationen

CAP1, also known as CAP, CAP1-PEN, belongs to the CAP family and contains 1 C-CAP/cofactor C-like domain. CAP1 binds to monomeric actin and regulates the actin cytoskeleton to control cell size, adhesion, and migration (PMID: 23737525). CAP1 also functions as a receptor for inflammatory cytokine resistin (PMID: 24606903). CAP1 is an abundant and ubiquitously expressed protein. Western blot analysis detected CAP1 at an apparent molecular mass of 52 kDa.

Lagerung

Lagerungsbedingungen:
Bei -20°C lagern. Nach dem Versand ein Jahr lang stabil
Lagerungspuffer:
PBS mit 0.02% Natriumazid und 50% Glycerin pH 7.3.
Aliquotieren ist nicht notwendig bei -20°C Lagerung

***** 20ul-Größen enthalten 0.1% BSA**

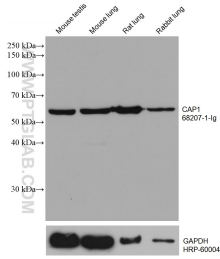
For technical support and original validation data for this product please contact:

T: 1 (888) 4PTGLAB (1-888-478-4522) (toll free in USA), or 1(312) 455-8498 (outside USA)

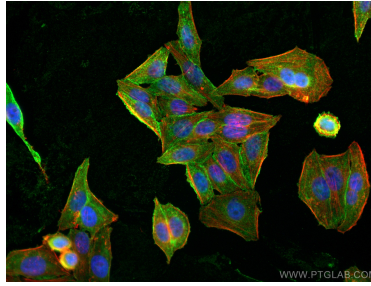
E: proteintech@ptglab.com
W: ptglab.com

This product is exclusively available under Proteintech Group brand and is not available to purchase from any other manufacturer.

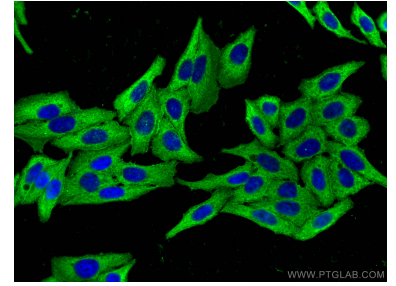
Ausgewählte Validierungsdaten



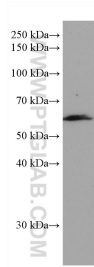
Various lysates were subjected to SDS PAGE followed by western blot with 68207-1-Ig (CAP1 antibody) at dilution of 1:20000 incubated at room temperature for 1.5 hours. The membrane was stripped and reblotted with HRP-conjugated GAPDH Monoclonal antibody (HRP-60004) as loading control.



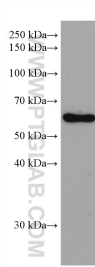
Immunofluorescent analysis of (4% PFA) fixed HepG2 cells using CAP1 antibody (68207-1-Ig, Clone: 2H3A10) at dilution of 1:800 and Coralite@488-Conjugated AffiniPure Goat Anti-Mouse IgG(H+L), CL594-Phalloidin (red).



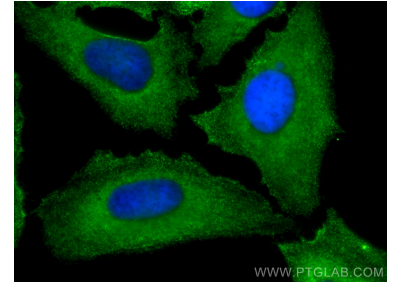
Immunofluorescent analysis of (-20°C Ethanol) fixed HepG2 cells using CAP1 antibody (68207-1-Ig, Clone: 2H3A10) at dilution of 1:800 and Coralite@488-Conjugated AffiniPure Goat Anti-Mouse IgG(H+L).



pig lung tissue were subjected to SDS PAGE followed by western blot with 68207-1-Ig (CAP1 antibody) at dilution of 1:20000 incubated at room temperature for 1.5 hours.



human placenta tissue were subjected to SDS PAGE followed by western blot with 68207-1-Ig (CAP1 antibody) at dilution of 1:20000 incubated at room temperature for 1.5 hours.



Immunofluorescent analysis of (-20°C Methanol) fixed HeLa cells using CAP1 antibody (68207-1-Ig, Clone: 2H3A10) at dilution of 1:400 and Coralite@488-Conjugated AffiniPure Goat Anti-Mouse IgG(H+L).