

Nur für Forschungszwecke

# LETM1 Monoklonaler Antikörper

Katalog-Nr.: 68208-1-Ig

Vorgestelltes Produkt



## Allgemeine Informationen

<b>Katalog-Nr.:</b> 68208-1-Ig	<b>GenBank-Zugangsnummer:</b> BC021208	<b>Reinigungsmethode:</b> Protein-G-Reinigung
<b>Größe:</b> 150ul, Konzentration: 1000 µg/ml von 3954 Nanodrop;	<b>GeneID (NCBI):</b> 3954	<b>CloneNo.:</b> 2B9B9
<b>Wirt:</b> Maus	<b>Vollständiger Name:</b> leucine zipper-EF-hand containing transmembrane protein 1	<b>Empfohlene Verdünnungen:</b> WB 1:5000-1:50000 IF 1:200-1:800
<b>Isotyp:</b> IgG1	<b>Berechnete Masse:</b> 739 aa, 83 kDa	
<b>Immunogen Katalognummer:</b> AG8851	<b>Beobachtete Masse:</b> 83 kDa	

## Anwendungen

### Geprüfte Anwendungen:

IF, WB, ELISA

### Getestete Reaktivität:

Human, Ratte

### Positivkontrollen:

WB: HeLa-Zellen, HEK-293-Zellen, HepG2-Zellen,  
Jurkat-Zellen, K-562-Zellen, Rattenherzgewebe

IF: HeLa-Zellen, U-251-Zellen

## Hintergrundinformationen

LETM1 is a mitochondrial inner membrane protein. It functions to maintain the mitochondrial tubular shapes and is required for normal mitochondrial morphology and cellular viability. It served as an anchor protein for complex formation between mitochondria and ribosome, and regulated mitochondrial biogenesis. It was also identified in Wolf-Hirschhorn syndrome, and was deleted in nearly all patients with the syndrome. A recent study determined that adenovirus-mediated LETM1 may provide a useful target for designing lung tumor prevention and treatment.

## Lagerung

### Lagerungsbedingungen:

Bei -20°C lagern. Nach dem Versand ein Jahr lang stabil

### Lagerungspuffer:

PBS mit 0.02% Natriumazid und 50% Glycerin pH 7.3.

Aliquotieren ist nicht notwendig bei -20°C Lagerung

\*\*\* 20ul-Größen enthalten 0.1% BSA

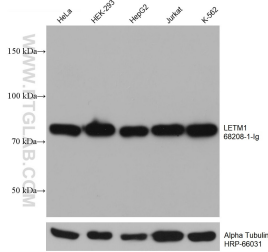
For technical support and original validation data for this product please contact:

T: 1 (888) 4PTGLAB (1-888-478-4522) (toll free  
in USA), or 1(312) 455-8498 (outside USA)

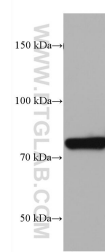
E: proteintech@ptglab.com  
W: ptglab.com

This product is exclusively available under Proteintech Group brand and is not available to purchase from any other manufacturer.

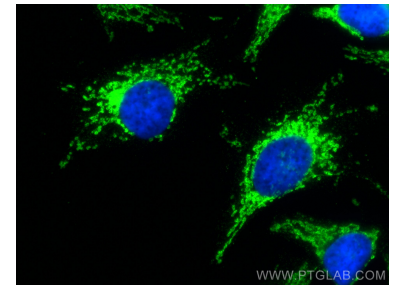
## Ausgewählte Validierungsdaten



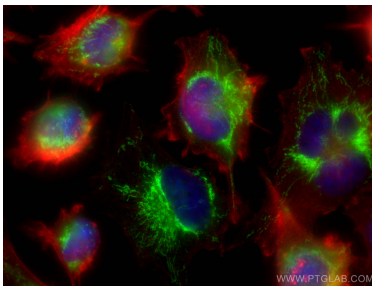
HeLa cells were subjected to SDS PAGE followed by western blot with 68208-1-Ig (LETM1 antibody) at dilution of 1:10000 incubated at room temperature for 1.5 hours. The membrane was stripped and reblotted with HRP-conjugated Alpha Tubulin Monoclonal antibody (HRP-66031) as loading control.



rat heart tissue were subjected to SDS PAGE followed by western blot with 68208-1-Ig (LETM1 antibody) at dilution of 1:10000 incubated at room temperature for 1.5 hours.



Immunofluorescent analysis of (-20°C Methanol) fixed HeLa cells using LETM1 antibody (68208-1-Ig, Clone: 2B9B9) at dilution of 1:400 and CoraLite®488-Conjugated AffiniPure Goat Anti-Mouse IgG(H+L).



Immunofluorescent analysis of (-20°C Ethanol) fixed U-251 cells using LETM1 antibody (68208-1-Ig, Clone: 2B9B9) at dilution of 1:400 and CoraLite®488-Conjugated AffiniPure Goat Anti-Mouse IgG(H+L), CL594-Phalloidin (red).