

Nur für Forschungszwecke

# Integrin alpha-1 Monoklonaler Antikörper

Katalog-Nr.: 68211-1-Ig



## Allgemeine Informationen

<b>Katalog-Nr.:</b> 68211-1-Ig	<b>GenBank-Zugangsnummer:</b> BC137121	<b>Reinigungsmethode:</b> Protein-A-Reinigung
<b>Größe:</b> 150ul, Konzentration: 1000 µg/ml von 3672 Nanodrop;	<b>GeneID (NCBI):</b> integrin, alpha 1	<b>CloneNo.:</b> 1C4F2
<b>Wirt:</b> Maus	<b>Vollständiger Name:</b> integrin, alpha 1	<b>Empfohlene Verdünnungen:</b> WB 1:5000-1:50000
<b>Isotyp:</b> IgG2a	<b>Berechnete Masse:</b> 1179 aa, 131 kDa	
<b>Immunogen Katalognummer:</b> AG30631	<b>Beobachtete Masse:</b> 180 kDa	

## Anwendungen

<b>Geprüfte Anwendungen:</b> WB, ELISA	<b>Positivkontrollen:</b> WB : HepG2-Zellen, humanes Plazenta-Gewebe
<b>Getestete Reaktivität:</b> Human	

## Hintergrundinformationen

The integrins are a superfamily of cell adhesion receptors that bind to extracellular matrix ligands, cell-surface ligands, and soluble ligands (PMID: 17543136). They are transmembrane  $\alpha\beta$  heterodimers and at least 24 distinct integrin heterodimers are formed by the combination of 18  $\alpha$  and eight  $\beta$  known subunits (PMID: 17543136; 20029421). In addition to mediating cell adhesion, integrins also play important roles in modulating signal transduction pathways that control cellular responses including migration, proliferation, differentiation, and apoptosis (PMID:19118207). Integrin alpha-1 (ITGA1, CD49a) combines with the beta 1 subunit (ITGB1, CD29) to form a cell-surface receptor for collagen and laminin. This receptor is involved in cell-cell adhesion and may play a role in inflammation and fibrosis. Integrin alpha-1 is a transmembrane glycoprotein with an apparent molecular weight of 180-250 kDa, larger than the calculated molecular weight of 131 kDa (PMID: 2475259; 3257425; 11557277; 18840653).

## Lagerung

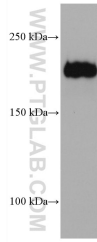
**Lagerungsbedingungen:**  
Bei -20°C lagern. Nach dem Versand ein Jahr lang stabil  
**Lagerungspuffer:**  
PBS mit 0.02% Natriumazid und 50% Glycerin pH 7.3.  
Aliquotieren ist nicht notwendig bei -20°C Lagerung

\*\*\* 20ul-Größen enthalten 0.1% BSA

For technical support and original validation data for this product please contact:  
T: 1 (888) 4PTGLAB (1-888-478-4522) (toll free in USA), or 1(312) 455-8498 (outside USA)  
E: proteintech@ptglab.com  
W: ptglab.com

This product is exclusively available under Proteintech Group brand and is not available to purchase from any other manufacturer.

## Ausgewählte Validierungsdaten



HepG2 cells were subjected to SDS PAGE followed by western blot with 68211-1-Ig (Integrin alpha-1 antibody) at dilution of 1:10000 incubated at room temperature for 1.5 hours.