

Nur für Forschungszwecke

# NOTCH2/NOTCH2NL Monoklonaler Antikörper



Katalog-Nr.: 68212-1-Ig

## Allgemeine Informationen

<b>Katalog-Nr.:</b> 68212-1-Ig	<b>GenBank-Zugangsnummer:</b> BC019835	<b>Reinigungsmethode:</b> Protein-G-Reinigung
<b>Größe:</b> 150ul, Konzentration: 1000 µg/ml von 388677 Nanodrop;	<b>GeneID (NCBI):</b> 388677	<b>CloneNo.:</b> 2D5E1
<b>Wirt:</b> Maus	<b>Vollständiger Name:</b> Notch homolog 2 (Drosophila) N-terminal like	<b>Empfohlene Verdünnungen:</b> WB 1:5000-1:50000
<b>Isotyp:</b> IgG1	<b>Berechnete Masse:</b> 265 kDa	
<b>Immunogen Katalognummer:</b> AG1679	<b>Beobachtete Masse:</b> 250-265 kDa	

## Anwendungen

<b>Geprüfte Anwendungen:</b> WB, ELISA	<b>Positivkontrollen:</b> WB : hTERT-RPE1-Zellen, U-87 MG-Zellen
<b>Getestete Reaktivität:</b> Human	

## Hintergrundinformationen

Notch 2 is a member of the notch family. Members of this Type 1 transmembrane protein family share structural characteristics including an extracellular domain consisting of multiple epidermal growth factor-like (EGF) repeats, and an intracellular domain consisting of multiple, different domain types. Notch family members play a role in a variety of developmental processes by controlling cell fate decisions. Notch2, like other Notch genes, functions in development of various tissues. This antibody can recognize NOTCH2 and NOTCH2NL.

## Lagerung

**Lagerungsbedingungen:**  
Bei -20°C lagern. Nach dem Versand ein Jahr lang stabil  
**Lagerungspuffer:**  
PBS mit 0.02% Natriumazid und 50% Glycerin pH 7.3.  
Aliquotieren ist nicht notwendig bei -20°C Lagerung

\*\*\* 20ul-Größen enthalten 0.1% BSA

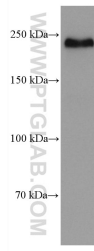
For technical support and original validation data for this product please contact:

T: 1 (888) 4PTGLAB (1-888-478-4522) (toll free in USA), or 1(312) 455-8498 (outside USA)

E: [proteintech@ptglab.com](mailto:proteintech@ptglab.com)  
W: [ptglab.com](http://ptglab.com)

This product is exclusively available under Proteintech Group brand and is not available to purchase from any other manufacturer.

## Ausgewählte Validierungsdaten



hTERT-RPE1 cells were subjected to SDS PAGE followed by western blot with 68212-1-Ig (NOTCH2 antibody) at dilution of 1:10000 incubated at room temperature for 1.5 hours.