

Nur für Forschungszwecke

NF90/ILF3 Monoklonaler Antikörper

Katalog-Nr.:68213-1-Ig



Allgemeine Informationen

Katalog-Nr.: 68213-1-Ig	GenBank-Zugangsnummer: BC064836	Reinigungsmethode: Protein-G-Reinigung
Größe: 150ul, Konzentration: 1000 µg/ml von3609 Nanodrop;	GeneID (NCBI): 3609	CloneNo.: 2H10G3
Wirt: Maus	Vollständiger Name: interleukin enhancer binding factor 3, WB 1:5000-1:50000 90kDa	Empfohlene Verdünnungen:
Isotyp: IgG1	Berechnete Masse: 894 aa, 95 kDa	
Immunogen Katalognummer: AG30868	Beobachtete Masse: 90 kDa, 110 kDa	

Anwendungen

Geprüfte Anwendungen:
WB, ELISA

Getestete Reaktivität:
Human, Maus, Ratte

Positivkontrollen:

WB: A431-Zellen, 4T1-Zellen, HEK-293-Zellen, HeLa-Zellen, Jurkat-Zellen, K-562-Zellen, LNCaP-Zellen, NIH/3T3-Zellen

Hintergrundinformationen

Lagerung

Lagerungsbedingungen:
Bei -20°C lagern. Nach dem Versand ein Jahr lang stabil

Lagerungspuffer:
PBS mit 0.02% Natriumazid und 50% Glycerin pH 7.3.

Aliquotieren ist nicht notwendig bei -20°C Lagerung

*** 20ul-Größen enthalten 0.1% BSA

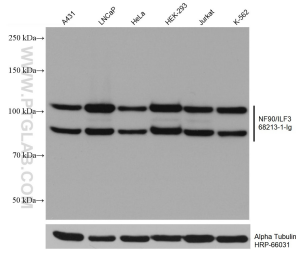
For technical support and original validation data for this product please contact:

T: 1 (888) 4PTGLAB (1-888-478-4522) (toll free
in USA), or 1(312) 455-8498 (outside USA)

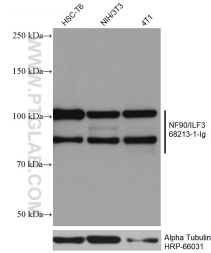
E: proteintech@ptglab.com
W: ptglab.com

This product is exclusively available under Proteintech Group brand and is not available to purchase from any other manufacturer.

Ausgewählte Validierungsdaten



A431 cells were subjected to SDS PAGE followed by western blot with 68213-1-Ig (NF90/ILF3 antibody) at dilution of 1:20000 incubated at room temperature for 1.5 hours. The membrane was stripped and reblotted with HRP-conjugated Alpha Tubulin Monoclonal antibody (HRP-66031) as loading control.



Various lysates were subjected to SDS PAGE followed by western blot with 68213-1-Ig (NF90/ILF3 antibody) at dilution of 1:20000 incubated at room temperature for 1.5 hours. The membrane was stripped and reblotted with HRP-conjugated Alpha Tubulin Monoclonal antibody (HRP-66031) as loading control.