

Nur für Forschungszwecke

IMMT Monoklonaler Antikörper

Katalog-Nr.:68226-1-Ig



Allgemeine Informationen

Katalog-Nr.: 68226-1-Ig	GenBank-Zugangsnummer: BC002412	Reinigungsmethode: Protein-A-Reinigung
Größe: 150ul , Konzentration: 500 µg/ml von Nanodrop;	GeneID (NCBI): 10989	CloneNo.: 2D2E8
Wirt: Maus	Vollständiger Name: inner membrane protein, mitochondrial (mitofilin)	Empfohlene Verdünnungen: WB 1:5000-1:50000 IF 1:400-1:1600
Isotyp: IgG2b	Berechnete Masse: 90 kDa	
Immunogen Katalognummer: AG0102	Beobachtete Masse: 90 kDa	

Anwendungen

Geprüfte Anwendungen: FC, IF, WB, ELISA	Positivkontrollen:
Getestete Reaktivität: Human, Maus, Ratte	WB : HeLa-Zellen, HepG2-Zellen IF : HeLa-Zellen,

Hintergrundinformationen

IMMT (also known as mitofilin) is an inner mitochondrial membrane protein that is preferentially expressed in heart tissue and is commonly used as the marker for mitochondria. Mitofilin is known to be a critical organizer of mitochondrial cristae morphology and is indispensable for normal mitochondrial function. Three isoforms of mitofilin exist due to the alternative splicing. All three proteins of 87kD, 89kD and 80kD can be detected in immunoblot analysis with this antibody.

Lagerung

Lagerungsbedingungen:
Bei -20°C lagern. Nach dem Versand ein Jahr lang stabil
Lagerungspuffer:
PBS mit 0.02% Natriumazid und 50% Glycerin pH 7.3.
Aliquotieren ist nicht notwendig bei -20°C Lagerung

***** 20ul-Größen enthalten 0.1% BSA**

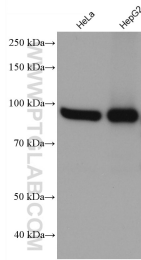
For technical support and original validation data for this product please contact:

T: 1 (888) 4PTGLAB (1-888-478-4522) (toll free
in USA), or 1(312) 455-8498 (outside USA)

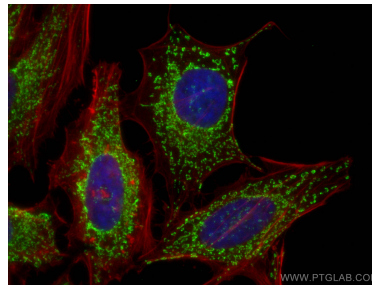
E: proteintech@ptglab.com
W: ptglab.com

This product is exclusively available under Proteintech Group brand and is not available to purchase from any other manufacturer.

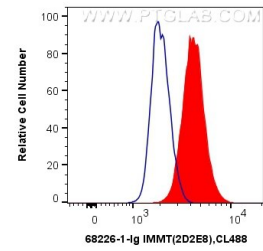
Ausgewählte Validierungsdaten



Various lysates were subjected to SDS PAGE followed by western blot with 68226-1-Ig (IMMT antibody) at dilution of 1:10000 incubated at room temperature for 1.5 hours.



Immunofluorescent analysis of (4% PFA) fixed HeLa cells using IMMT antibody (68226-1-Ig, Clone: 2D2E8) at dilution of 1:800 and CoraLite® 488-Conjugated AffiniPure Goat Anti-Mouse IgG(H+L), CL594-Phalloidin (red).



1X10⁶ HEK-293 cells were intracellularly stained with 0.4 ug Anti-Human IMMT (68226-1-Ig, Clone: 2D2E8) and CoraLite® 488-Conjugated AffiniPure Goat Anti-Mouse IgG(H+L) at dilution 1:1000 (red), or 0.4 ug Mouse IgG2b Isotype Control (66360-3-Ig, Clone: K11B8C4B5) (blue). Cells were fixed with 4% PFA and permeabilized with Flow Cytometry Perm Buffer (PF00011-C).