

Nur für Forschungszwecke

NKRF Monoklonaler Antikörper

Katalog-Nr.:68230-1-Ig



Allgemeine Informationen

Katalog-Nr.: 68230-1-Ig	GenBank-Zugangsnummer: BC068514	Reinigungsmethode: Protein-G-Reinigung
Größe: 150ul , Konzentration: 1000 µg/ml von55922	GeneID (NCBI): von55922	CloneNo.: 1H10C8
Nanodrop;	Vollständiger Name: NFKB repressing factor	Empfohlene Verdünnungen: WB 1:1000-1:6000
Wirt: Maus	Berechnete Masse: 78 kDa	
Isotyp: IgG1	Beobachtete Masse: 100 kDa	
Immunogen Katalognummer: AG6374		

Anwendungen

Geprüfte Anwendungen: WB, ELISA	Positivkontrollen: WB : LNCaP-Zellen, HEK-293-Zellen, HeLa-Zellen, Jurkat-Zellen, K-562-Zellen, MCF-7-Zellen, NIH/3T3-Zellen
Getestete Reaktivität: Human, Maus, Ratte	

Hintergrundinformationen

NKRF, also named as Protein ITBA4 or Transcription factor NRF, is a 690 amino acid protein, which contains one G-patch domain and one R3H domain. NKRF is widely and constitutively expressed, with lower level in colon, peripheral blood lymphocytes, lung and kidney. NKRF interacts with a specific negative regulatory element (NRE) 5'-AATTCCTCTGA-3' to mediate transcriptional repression of certain NF-kappa-B responsive genes. NKRF is involved in the constitutive silencing of the IFN-β promoter, independently of the virus-induced signals, and in the inhibition of the basal and cytokine-induced iNOS promoter activity.

Lagerung

Lagerungsbedingungen:
Bei -20°C lagern. Nach dem Versand ein Jahr lang stabil
Lagerungspuffer:
PBS mit 0.02% Natriumazid und 50% Glycerin pH 7.3.
Aliquotieren ist nicht notwendig bei -20°C Lagerung

***** 20ul-Größen enthalten 0.1% BSA**

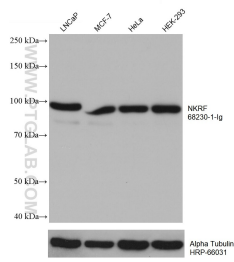
For technical support and original validation data for this product please contact:

T: 1 (888) 4PTGLAB (1-888-478-4522) (toll free in USA), or 1(312) 455-8498 (outside USA)

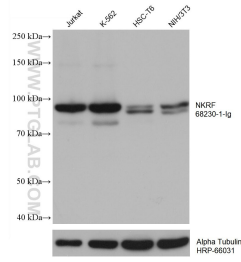
E: proteintech@ptglab.com
W: ptglab.com

This product is exclusively available under Proteintech Group brand and is not available to purchase from any other manufacturer.

Ausgewählte Validierungsdaten



Various lysates were subjected to SDS PAGE followed by western blot with 68230-1-Ig (NKRF antibody) at dilution of 1:3000 incubated at room temperature for 1.5 hours. The membrane was stripped and reblotted with HRP-conjugated Alpha Tubulin Monoclonal antibody (HRP-66031) as loading control.



Various lysates were subjected to SDS PAGE followed by western blot with 68230-1-Ig (NKRF antibody) at dilution of 1:3000 incubated at room temperature for 1.5 hours. The membrane was stripped and reblotted with HRP-conjugated Alpha Tubulin Monoclonal antibody (HRP-66031) as loading control.