

Nur für Forschungszwecke

# ALDH2 Monoklonaler Antikörper

Katalog-Nr.:68237-1-Ig

Vorgestelltes Produkt



## Allgemeine Informationen

<b>Katalog-Nr.:</b> 68237-1-Ig	<b>GenBank-Zugangsnummer:</b> BC002967	<b>Reinigungsmethode:</b> Protein-A-Reinigung
<b>Größe:</b> 150ul , Konzentration: 1000 µg/ml von217 Nanodrop;	<b>GeneID (NCBI):</b> 217	<b>CloneNo.:</b> 2G10F4
<b>Wirt:</b> Maus	<b>Vollständiger Name:</b> aldehyde dehydrogenase 2 family (mitochondrial)	<b>Empfohlene Verdünnungen:</b> WB 1:5000-1:50000
<b>Isotyp:</b> IgG2a	<b>Berechnete Masse:</b> 56 kDa	
<b>Immunogen Katalognummer:</b> AG7463	<b>Beobachtete Masse:</b> 50-55 kDa	

## Anwendungen

<b>Geprüfte Anwendungen:</b> WB, ELISA	<b>Positivkontrollen:</b> WB : Mauslebergewebe, Kaninchenlebergewebe, Rattenlebergewebe
<b>Getestete Reaktivität:</b> Hausschwein, Human, Kaninchen, Maus, Ratte	

## Hintergrundinformationen

Acetaldehyde dehydrogenase is the next enzyme after alcohol dehydrogenase in the major pathway of alcohol metabolism. It mediates NADP+-dependent oxidation of aldehydes into acids during detoxification of alcohol-derived acetaldehyde; lipid peroxidation; and metabolism of corticosteroids, biogenic amines and neurotransmitters. Genetic variation in ALDH2 is responsible for individual differences in responses to drinking alcohol. Thus, the absence of this enzyme is linked to alcohol intolerance and a reduced risk for alcoholism-related liver disease.

## Lagerung

**Lagerungsbedingungen:**  
Bei -20°C lagern. Nach dem Versand ein Jahr lang stabil  
**Lagerungspuffer:**  
PBS mit 0.02% Natriumazid und 50% Glycerin pH 7.3.  
Aliquotieren ist nicht notwendig bei -20°C Lagerung

\*\*\* 20ul-Größen enthalten 0.1% BSA

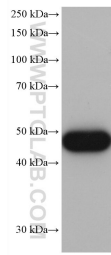
For technical support and original validation data for this product please contact:

T: 1 (888) 4PTGLAB (1-888-478-4522) (toll free  
in USA), or 1(312) 455-8498 (outside USA)

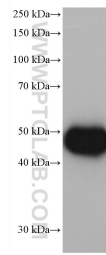
E: [proteintech@ptglab.com](mailto:proteintech@ptglab.com)  
W: [ptglab.com](http://ptglab.com)

This product is exclusively available under Proteintech Group brand and is not available to purchase from any other manufacturer.

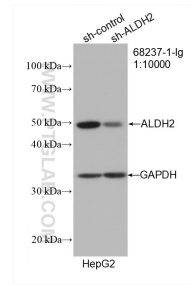
## Ausgewählte Validierungsdaten



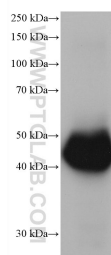
mouse liver tissue were subjected to SDS PAGE followed by western blot with 68237-1-Ig (ALDH2 antibody) at dilution of 1:20000 incubated at room temperature for 1.5 hours.



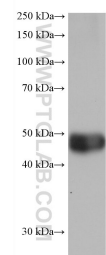
pig liver tissue were subjected to SDS PAGE followed by western blot with 68237-1-Ig (ALDH2 antibody) at dilution of 1:20000 incubated at room temperature for 1.5 hours.



WB result of ALDH2 antibody (68237-1-Ig; 1:10000; incubated at room temperature for 1.5 hours) with sh-Control and sh-ALDH2 transfected HepG2 cells.



rabbit liver tissue were subjected to SDS PAGE followed by western blot with 68237-1-Ig (ALDH2 antibody) at dilution of 1:20000 incubated at room temperature for 1.5 hours.



rat liver tissue were subjected to SDS PAGE followed by western blot with 68237-1-Ig (ALDH2 antibody) at dilution of 1:20000 incubated at room temperature for 1.5 hours.